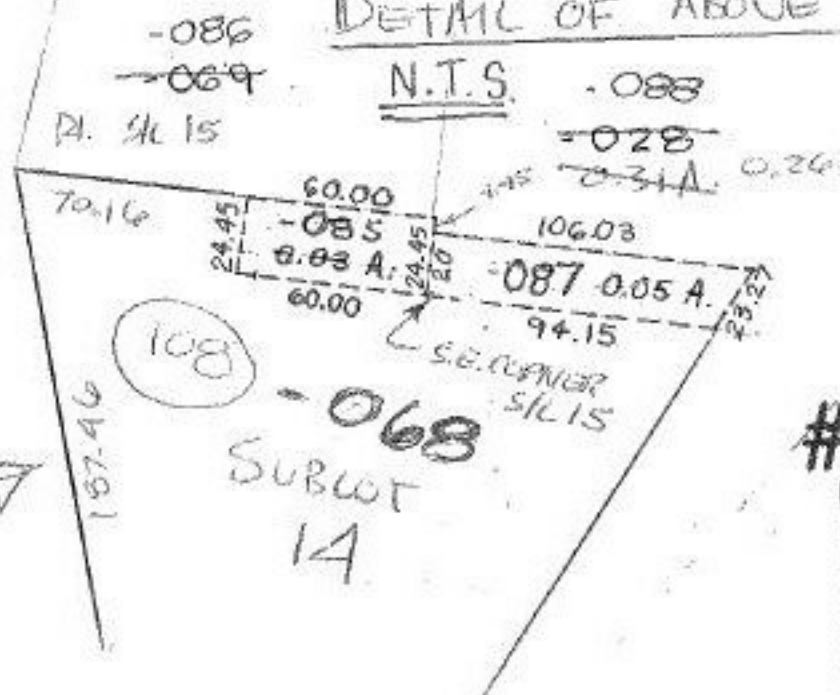


DETAIL OF ABOVE



PRIOR INSTRUMENT 733/64 + 7/176  
 CLOSURE 0.15 PER 10,000  
 SURVEYED BY DAVID L. ELWOOD

#22017

APPROVED  
 LORAIN CO.  
 MAP DEPT.  
 DATE 1-3-97  
 PAGE 4-00-011-H  
 BY K.DYE  
 VOID AFTER # 22017

V. 54 / P. 56  
 HIGHLAND PARK  
 SUB. NO. 1

890-068  
 SUBLOT  
 14