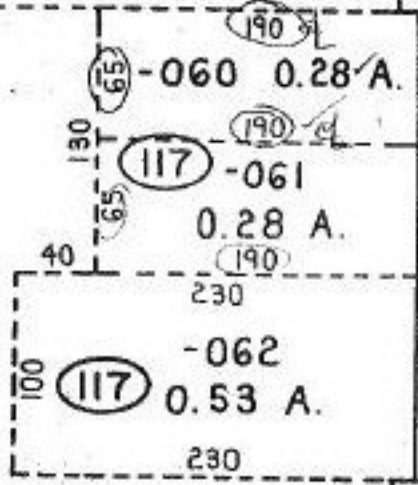


316 315 132.6' 83.44' 120 1 94.14' 69.14'

AVON RESERVE AT
SOMMER HILL #1

NO CHANGES
OF THE MAP

DEED AGREES
WITH MAP



LEAR + NAGLE

2315.00 to NE CORNER SECTION TO STONE ROW

481.55

352324
EMUS

AVON DEVELOPMENT SUBD #1
DV 57, Pgs 44, 45

2158
21982A/32
1575 #

APPROVED
LORIN CO.
MAP DEPT.
DATE 11-19-96
PAGE 4-00-02A-D
BY K.DYE
VOID AFTER # 21982-D

202.53

60

-150 230

H