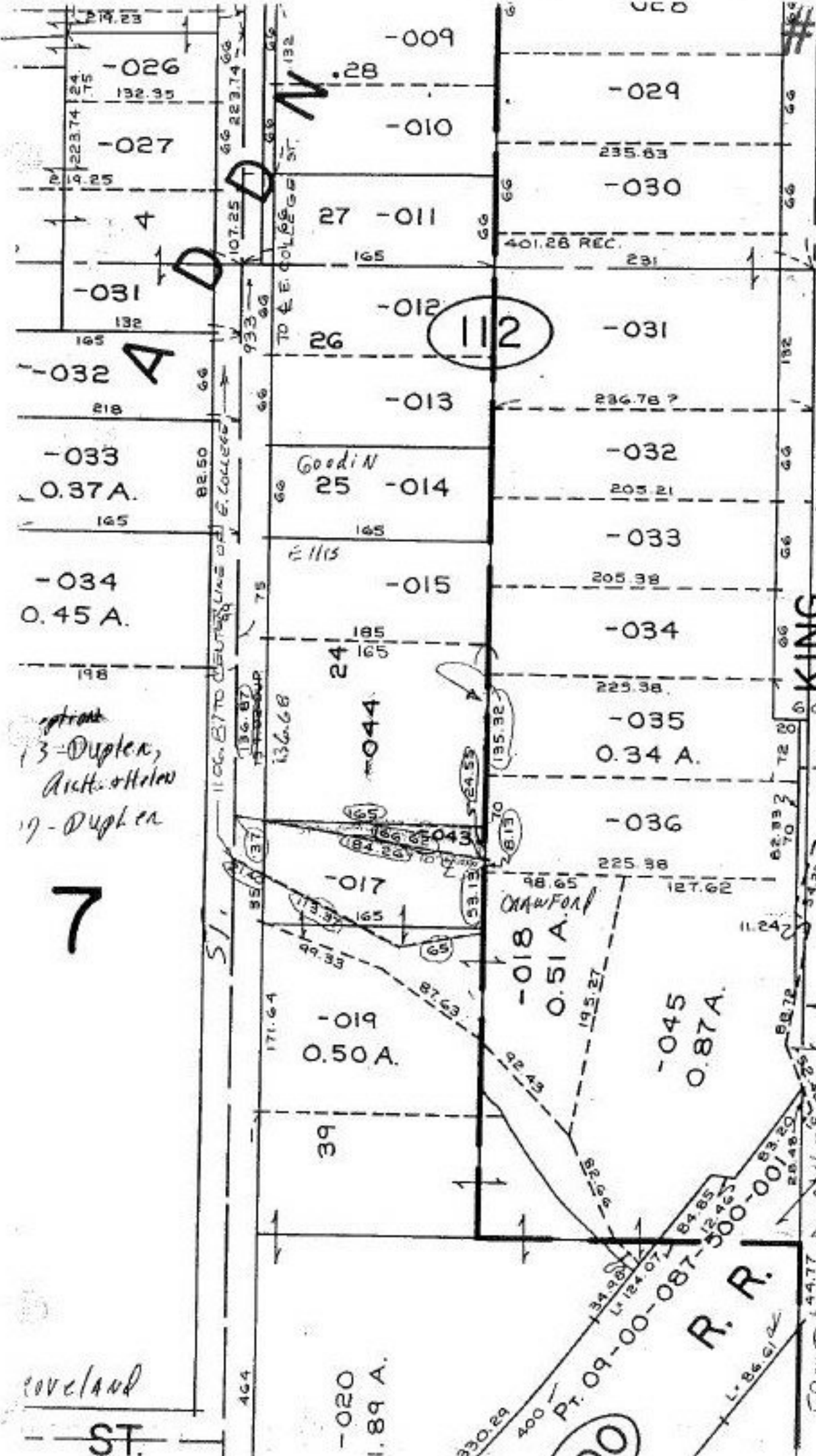


SEE 21973-X



9-00-086-B
 -044 about
 North-LN - 185.00 ⊕
 Rear - abt - 135.00
 South - 185.00 ⊕
 Front - 135.00
 ⊕ to center line

21.00
 DUPLEX
 136.87 X 165
 -044 134.20 X 125.00
 MATHEWS

SEE 9-00-087-A
 #21973-X

APPROVED
LORAIN CO.
MAP DEPT.
DATE 12-12-96
PAGE 9-00-086-B
BY T. McMain
21973-X

21973-X

13 - Duplex,
 Arch: other
 17 - Duplex

7

Cleveland
 ST.

FRONT DEPTH
 CORRECTION

R. R.

330.29
 400
 Pt. 09-00-087-300-001-20
 L. 86.91/2

-020
 1.89 A.

-045
 0.87 A.

-018
 0.51 A.

-019
 0.50 A.

-036
 0.34 A.

-044

Goodin
 25 -014

-033
 0.37 A.

-034
 0.45 A.

112

27 -011

26

24

-017

39

-020
 1.89 A.

-029

-030

-031

-032

-033

-034

-035

-036

-037

-038

-039

-040

-041

-042

-043

-044

-045

-046

-047

-048

-049

-050