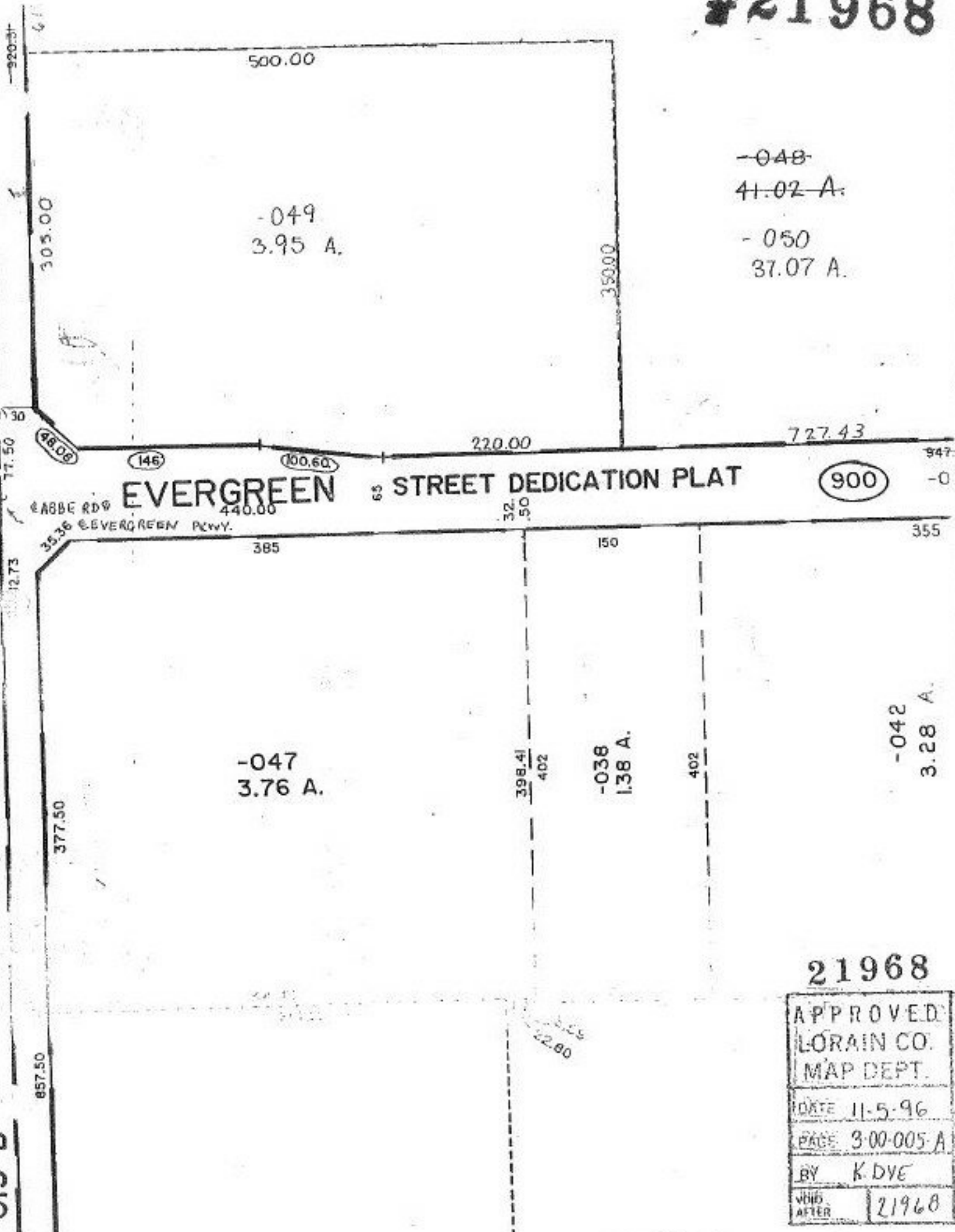


#21968



~~-048~~
~~41.02 A.~~
 -050
 37.07 A.

EVERGREEN STREET DEDICATION PLAT

900

-047
 3.76 A.

-038
 1.38 A.

-042
 3.28 A.

21968

APPROVED	
LORAIN CO.	
MAP DEPT.	
DATE	11-5-96
PAGE	3-00-005-A
BY	K. DYE
VOID AFTER	21968

-015-B