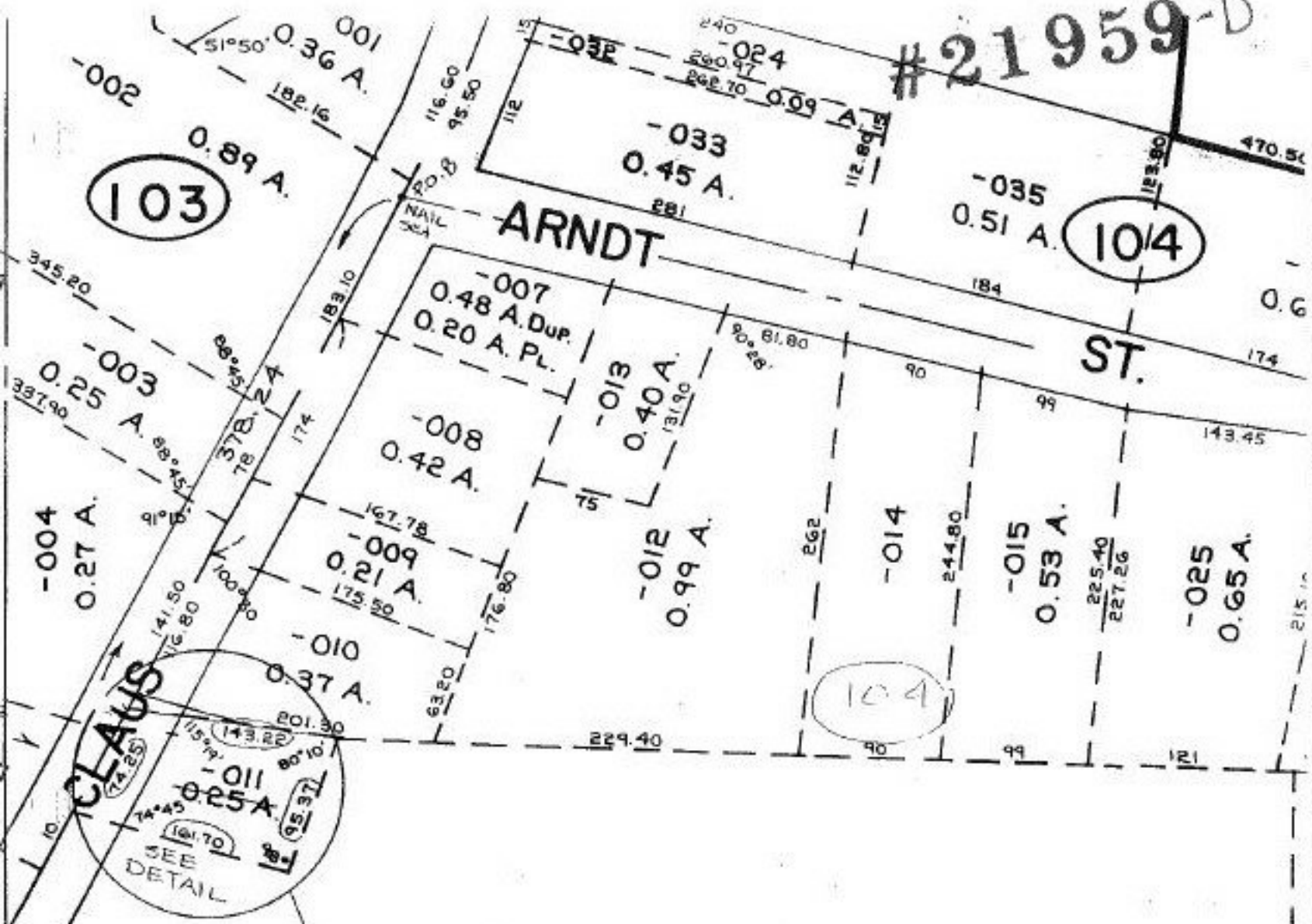
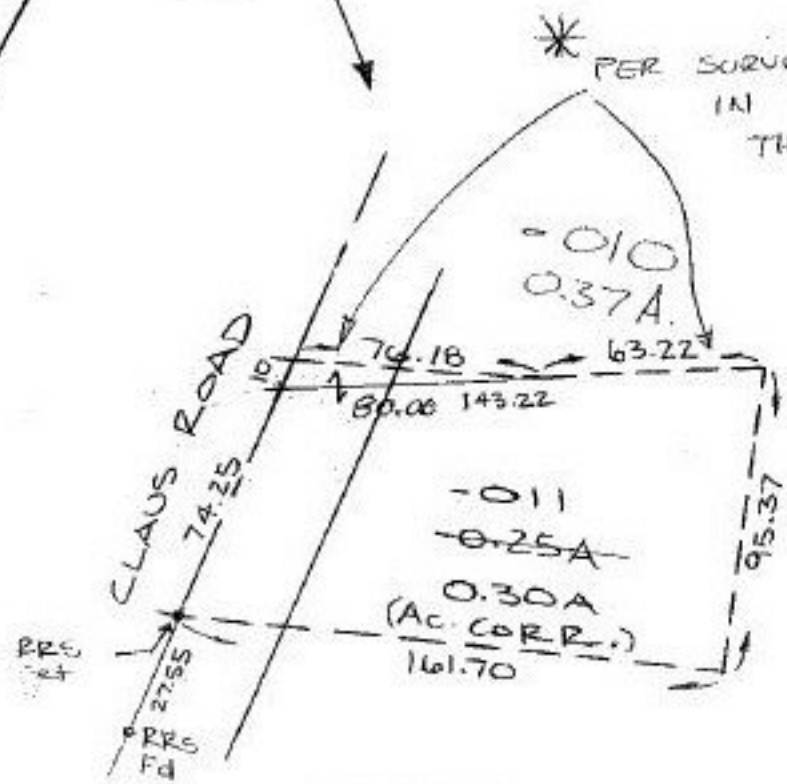


#21959-D



* PER SURVEY BY C. WARDU, THERE IS AN ANGLE POINT IN NORTH LINE OF -011 (SEE DV 59/400, 961) THIS WILL BE A MAP CORRECTION.



DETAIL
1" = 60'

MAP CORRECTION

21959-D

APPROVED LORAIN CO. MAP DEPT.	
DATE 12-06-96	
PAGE 1-00-022A	
BY R. BELL	
VOID AFTER #	21959-D