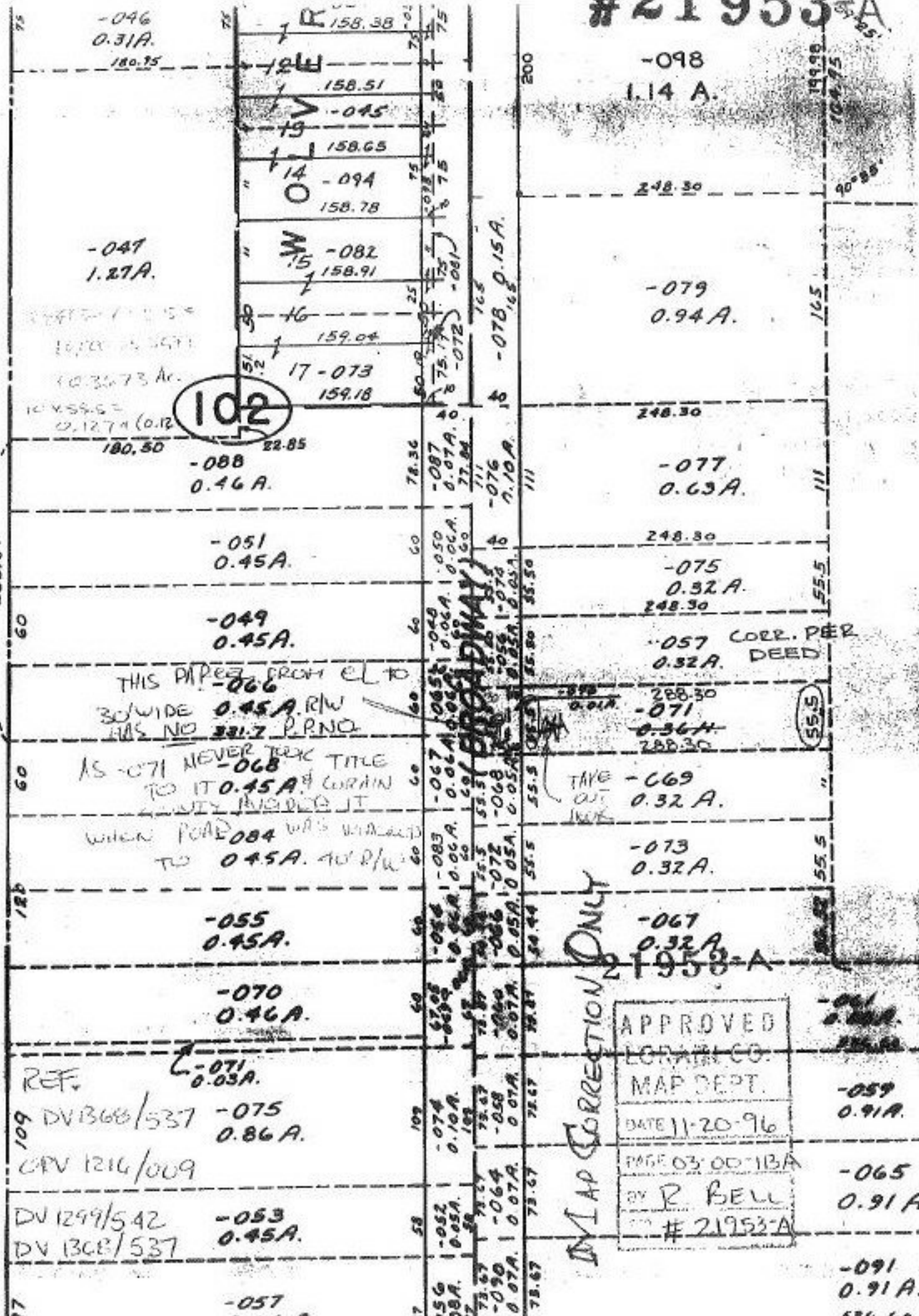


#21953-A

SEE 2-01-003-N



235.84

60

60

126

109

58

97

-046
0.31A.
180.75

-047
1.27A.

1070 10 5471
1032 73 Ac.
10459.6 =
12.1274 (0.12)

102

-088
0.46A.

-051
0.45A.

-049
0.45A.

THIS PIPE FROM EL TO
30' WIDE 0.45A RW
HAS NO 331.7 P.R.N.O.

AS 071 NEVER TOOK TITLE
TO IT 0.45A CORNIN
COUNTY INSIDED IT
WHEN ROAD 084 WAS WIDENED
TO 0.45A 40' RW

-055
0.45A.

-070
0.46A.

REF.
DV 1366/537
CPV 1216/009

-053
0.45A.

-057
0.46A.

158.38
158.51
-045
158.65
-094
158.78
-082
158.91
159.04
17-073
159.18

78.36
-087
0.07A.
77.84
-076
7.10A.

60
-049
0.06A.
60
-067
0.06A.
60
-068
0.05A.

60
-083
0.06A.
60
-084
0.06A.
60
-085
0.05A.

60
-074
0.07A.
60
-075
0.07A.
60
-076
0.07A.

60
-077
0.07A.
60
-078
0.07A.
60
-079
0.07A.

60
-080
0.07A.
60
-081
0.07A.
60
-082
0.07A.

60
-083
0.07A.
60
-084
0.07A.
60
-085
0.07A.

-078
0.15A.

-076
7.10A.

-075
0.32A.

-074
0.32A.

-073
0.32A.

-072
0.32A.

-071
0.32A.

-070
0.32A.

-069
0.32A.

-068
0.32A.

-067
0.32A.

-066
0.32A.

-065
0.32A.

-064
0.32A.

-063
0.32A.

-062
0.32A.

-061
0.32A.

-060
0.32A.

-059
0.32A.

200

111

60

60

60

60

60

60

60

60

60

60

60

MAP CORRECTION ONLY

APPROVED
LORAIN CO.
MAP DEPT.
DATE 11-20-96
PAGE 03 OF 13A
BY R. BELL
21953-A

-098
1.14 A.

248.30

-079
0.94 A.

248.30

-077
0.63 A.

248.30

-075
0.32 A.

248.30

-057 CORR. PER
DEED
0.32 A.

288.30

-071
0.36 A.

288.30

-069
0.32 A.

-073
0.32 A.

-067
0.32 A.

-066
0.32 A.

-065
0.32 A.

-059
0.91 A.

-065
0.91 A.

-091
0.91 A.

199.98

104.75

165

111

55.5

55.5

55.5

55.5

55.5

55.5

55.5

55.5

90°55'

90°55'

111

55.5

55.5

55.5

55.5

55.5

55.5

55.5

55.5