

# #2194



APPROVED  
 LORAIN CO.  
 MAP DEPT.  
 DATE 10-28-86  
 3-00-007-B  
 BY L.W. Hall  
 11/30/88 R.K.

S.S  
7-15-86

-022  
Pt. 851A

-004  
19.00 A.

-020  
9.74 A.

-017  
159.31  
129.41

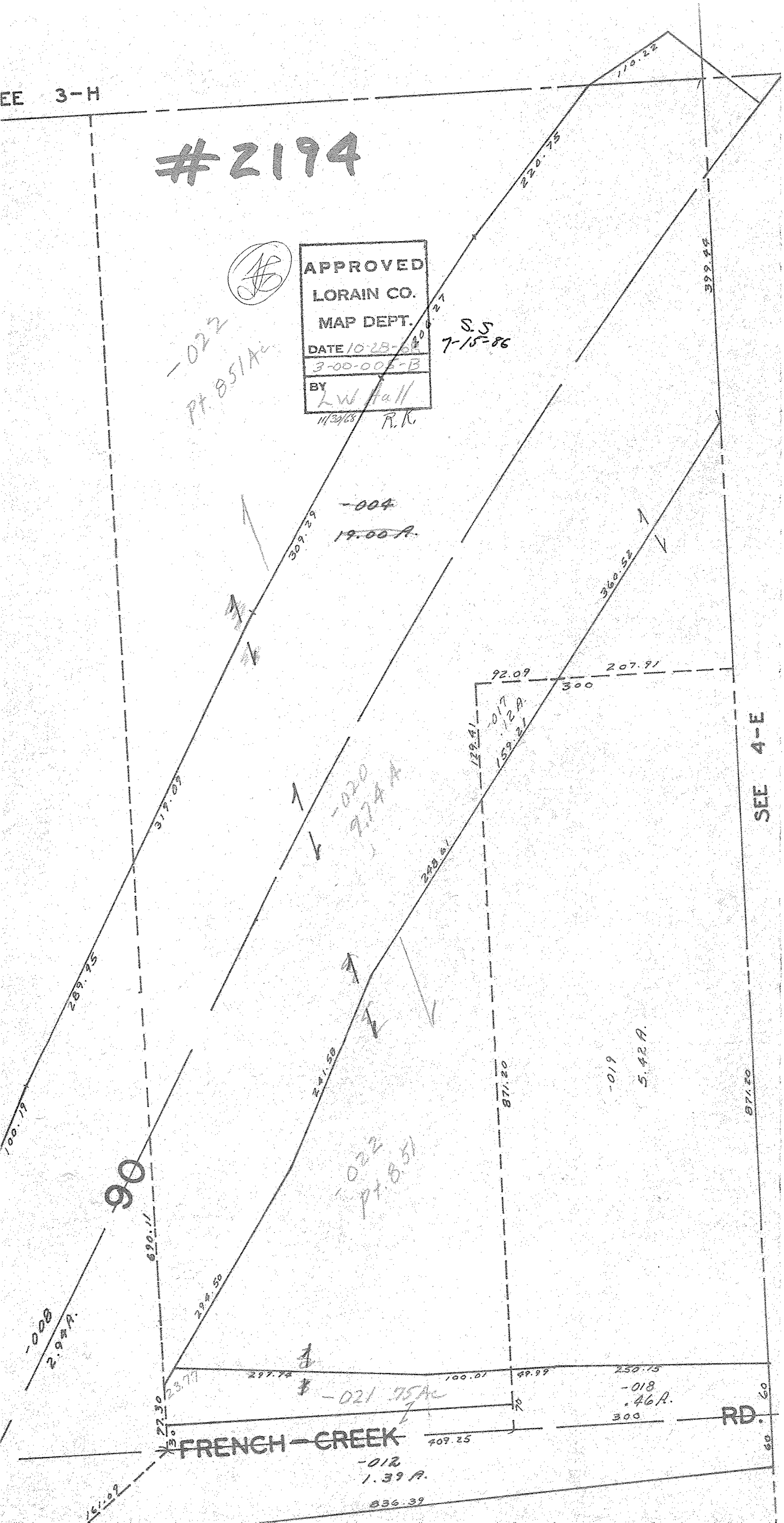
-019  
5.42 A.

-022  
Pt. 851

-021 75A

-018  
.46 A.

-012  
1.39 A.



SEE 4-E

RD.