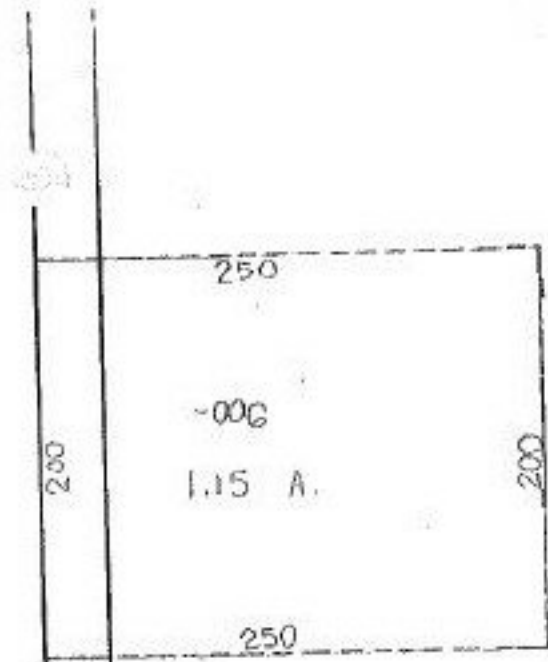


#21931

Pt. 007
Pt. 50.85 A

~~Pt. 001~~
~~Pt. 52.00 A~~



QUARRY RD

1430

-004
10.50 A

00-041-D
TO E GARFIELD RD.
A & QUARRY RD.

2102.08

320

21931

APPROVED	
LORAIN CO.	
MAP DEPT.	
DATE	11-5-96
PAGE	900-0A? A
BY	K. DYE
VOID AFTER	21931

Pt. - 0
Pt. 29.