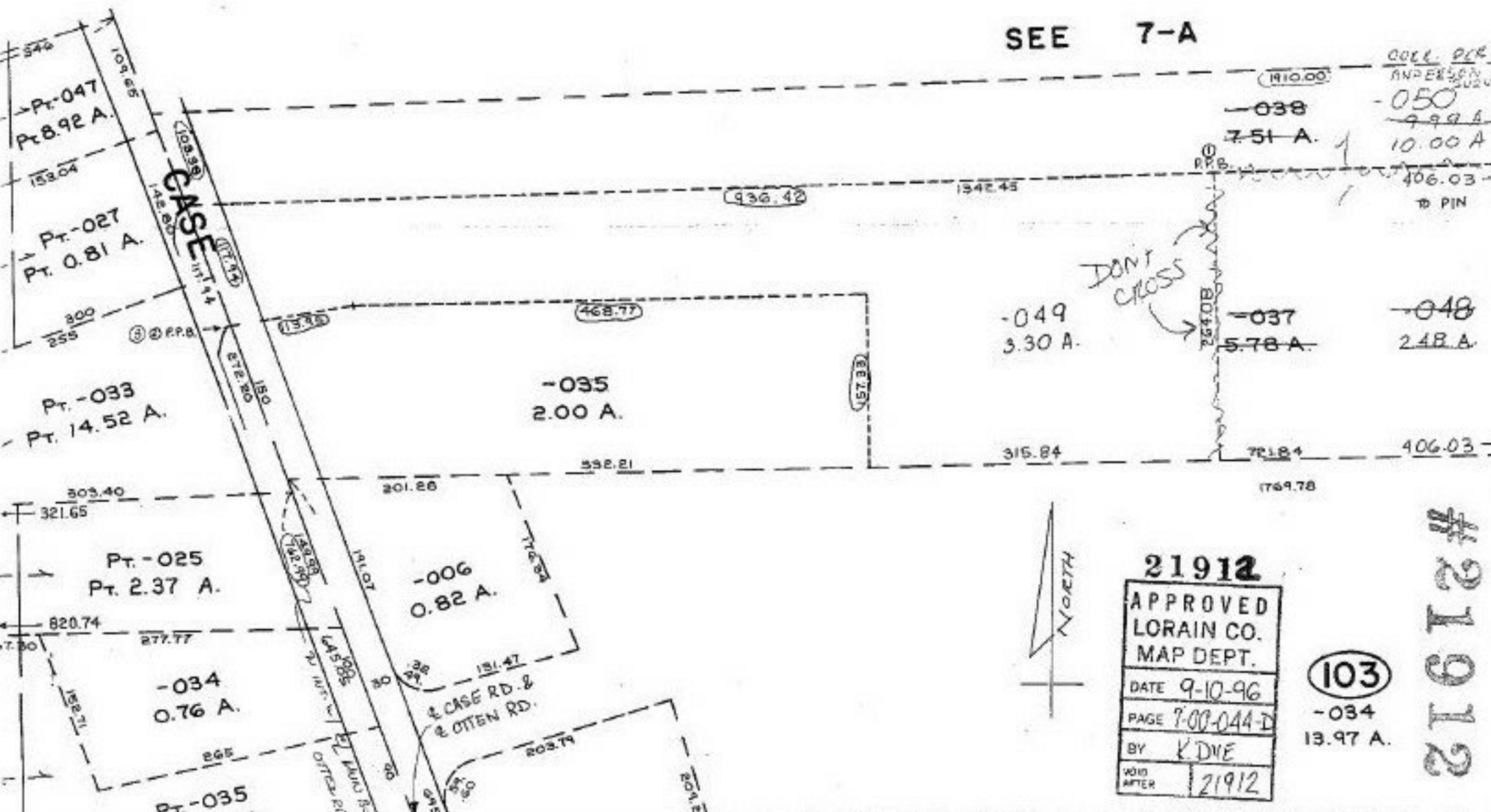


SEE 7-A

COLL. PER
ANDERSON
2002
-050
999 A
10.00 A
406.03
TO PIN



21912

APPROVED
LORAIN CO.
MAP DEPT.
DATE 9-10-96
PAGE 7-00-044-D
BY KDVE
VOID AFTER 21912

(103)

-034
13.97 A.

#21912