

#21892

SEE

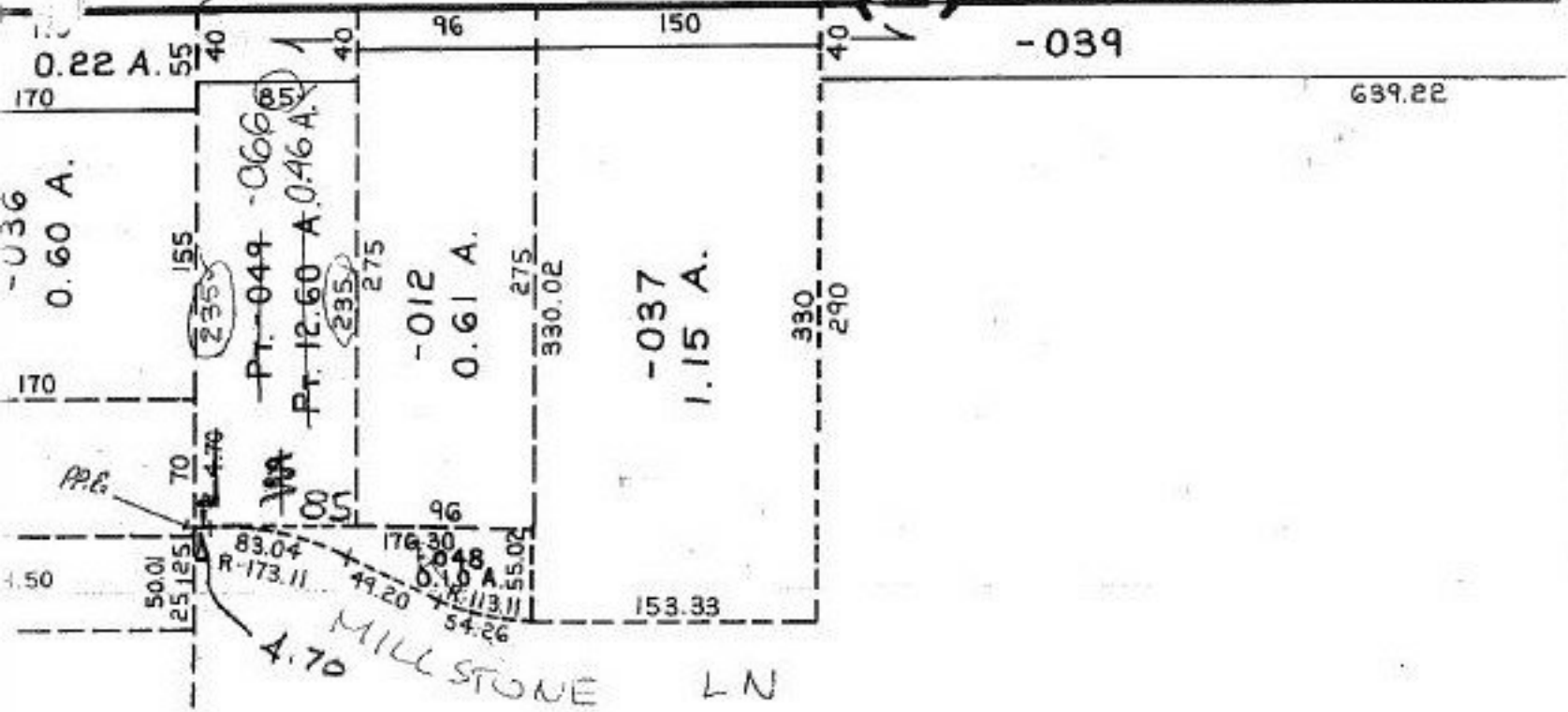
# COOPER FOSTER PARK

CO. COMM. RES. 6

991.12

-039

639.22



PRIOR INSTRUMENT OR 99/44  
 CLOSURE 0.00 PER 10,000  
 SURVEYED BY DAVID ELWELL

#21892

APPROVED	
LORAIN CO.	
MAP DEPT.	
DATE	8-16-96
PAGE	5-00-060-A
BY	K. DYE
VOID AFTER	21892

-045  
39.25 A.