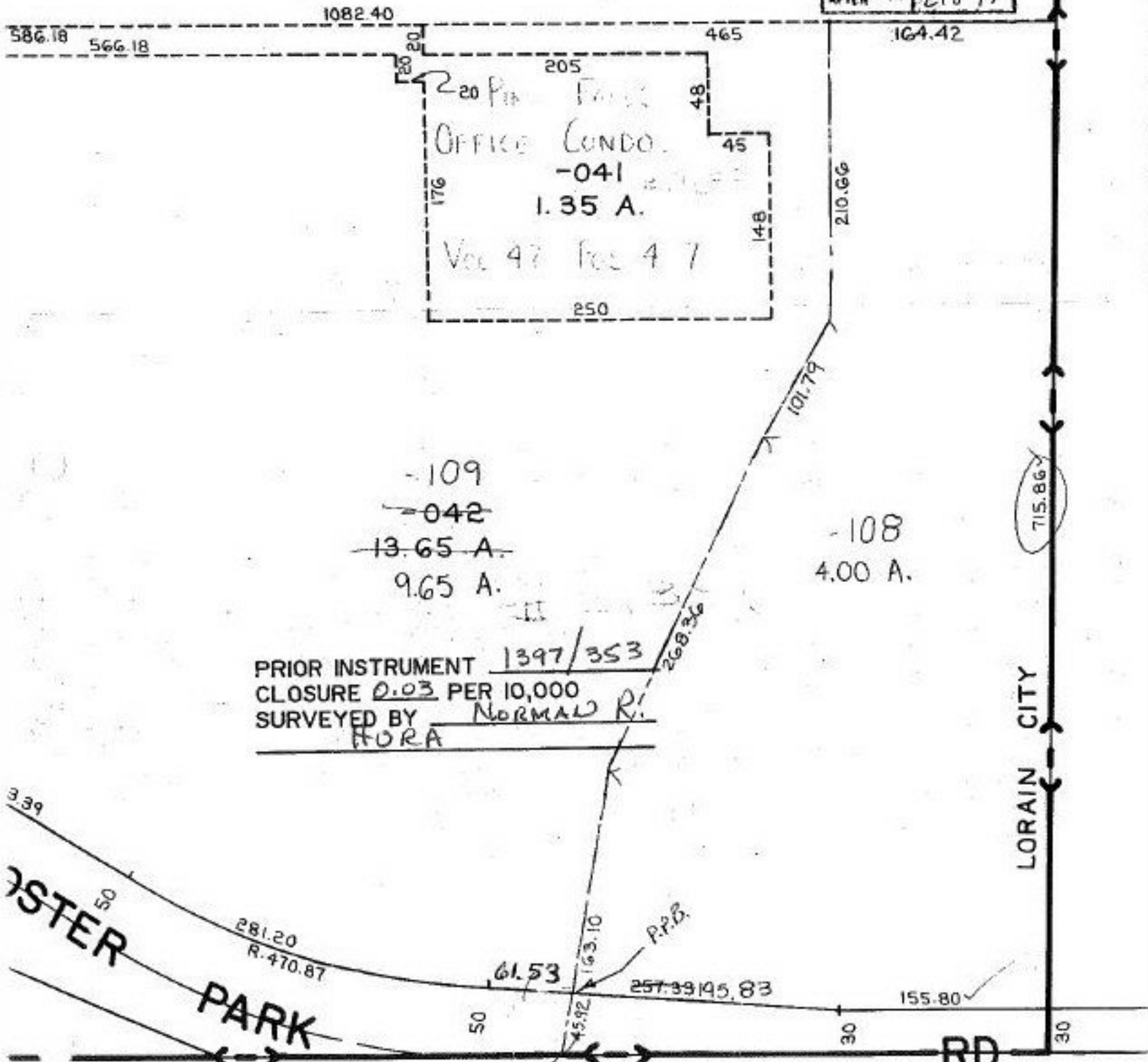


21891  
 APPROVED  
 LORAIN CO.  
 MAP DEPT.  
 DATE 8-16-96  
 PAGE 5-00-020-A  
 BY K.DYE  
 VOID AFTER # 21891



~~-109~~  
~~-042~~  
~~13.65 A.~~  
~~9.65 A.~~  
 PRIOR INSTRUMENT 1397/353  
 CLOSURE 0.03 PER 10,000  
 SURVEYED BY NORMAN R. HORA

SEE 5-00-019-A  
 OAK POINT RD. & ORIGINAL & COOPER FOSTER PARK