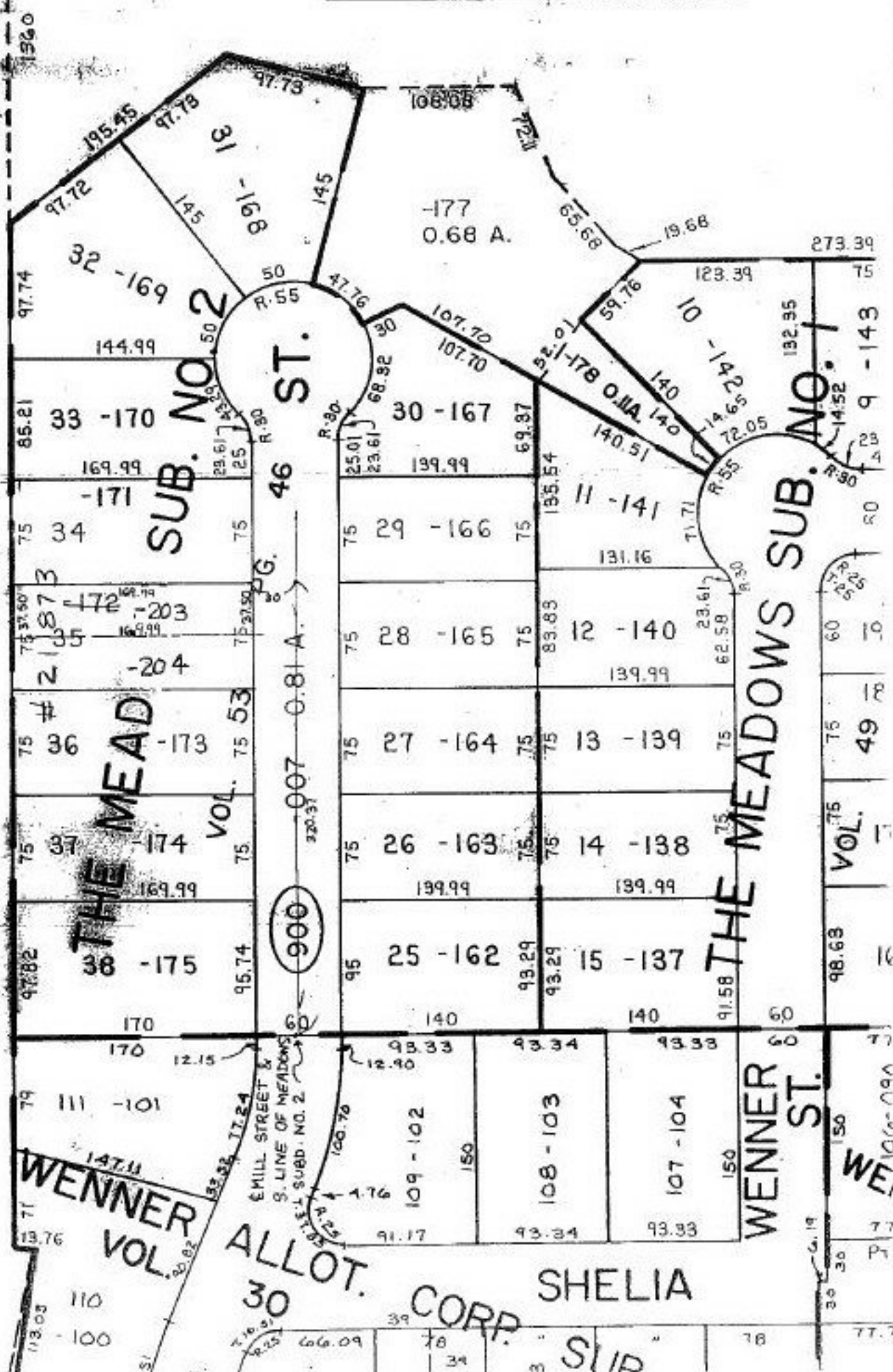


PRIOR INSTRUMENT OR 1082/246
 CLOSURE 0.00 PER 10000
 SURVEYED BY PHILLIP A ROSE BECK
#21873

101



21873

APPROVED
 LORAIN CO.
 MAP DEPT.
 DATE 8-15-96
 GE 18-00-028-A
 BY K. DYE
 VOID AFTER 21873

ALLOT. SHELIA
 30 CORP.
 SLIP