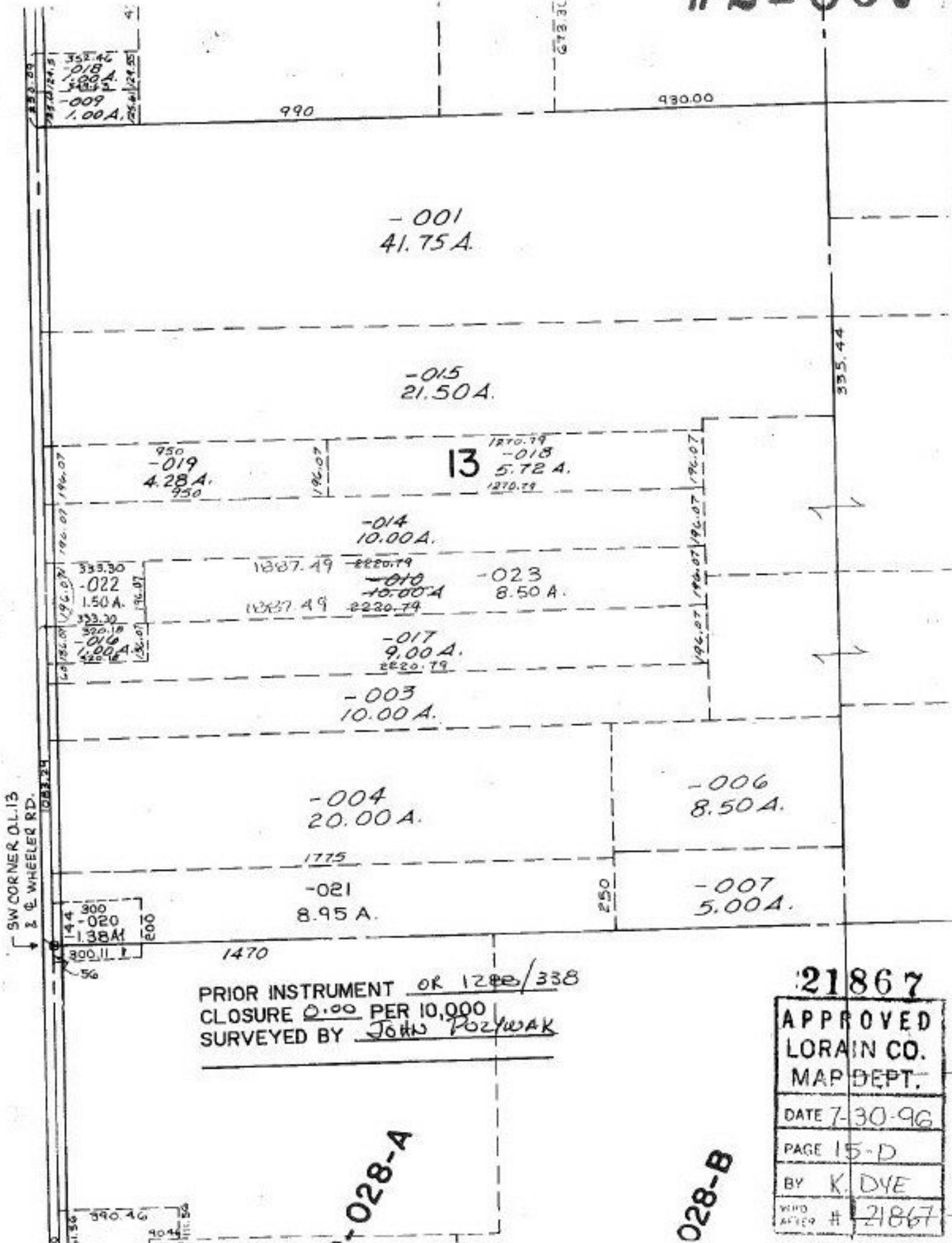


#21867



SW CORNER O.L. 13 & E. WHEELER RD.

PRIOR INSTRUMENT OR 1288/338  
 CLOSURE 0.00 PER 10,000  
 SURVEYED BY JOHN POZYWAK

028-A

028-B

21867

APPROVED	
LORAIN CO.	
MAP DEPT.	
DATE	7-30-96
PAGE	15-D
BY	K. DYE
WHD AFTER #	21867