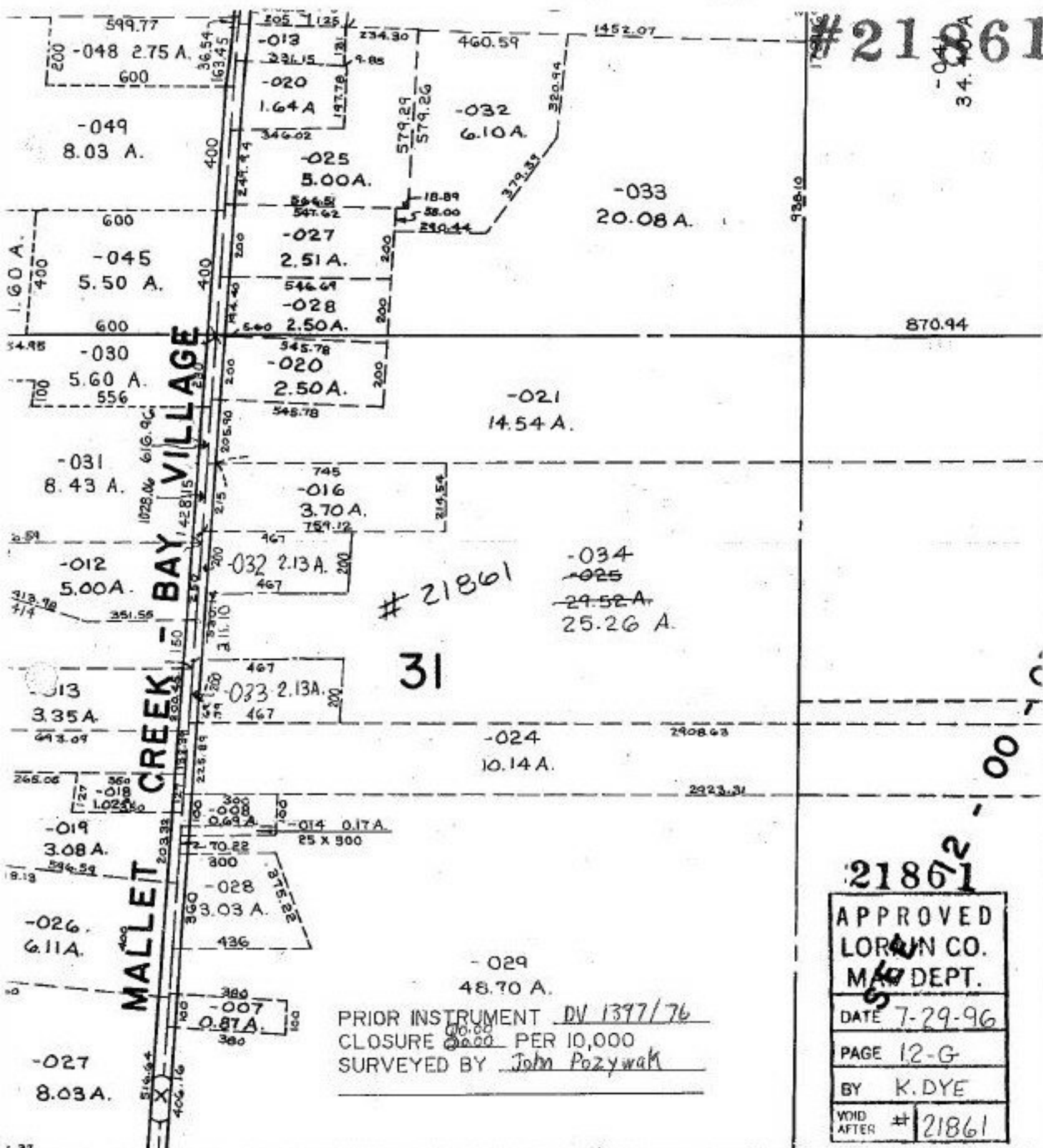


#21861

-044  
34.40A



#21861

31

-034  
-025  
24.52A  
25.26A

PRIOR INSTRUMENT DV 1397/76  
 CLOSURE 2000 PER 10,000  
 SURVEYED BY John Poznyak

21861<sup>2</sup>

APPROVED
LORAN CO.
M/D DEPT.
DATE 7-29-96
PAGE 12-G
BY K. DYE
VOID AFTER # 21861



# COLUMBIA

35, 46 THRU 50

SCALE: 1" = 400'