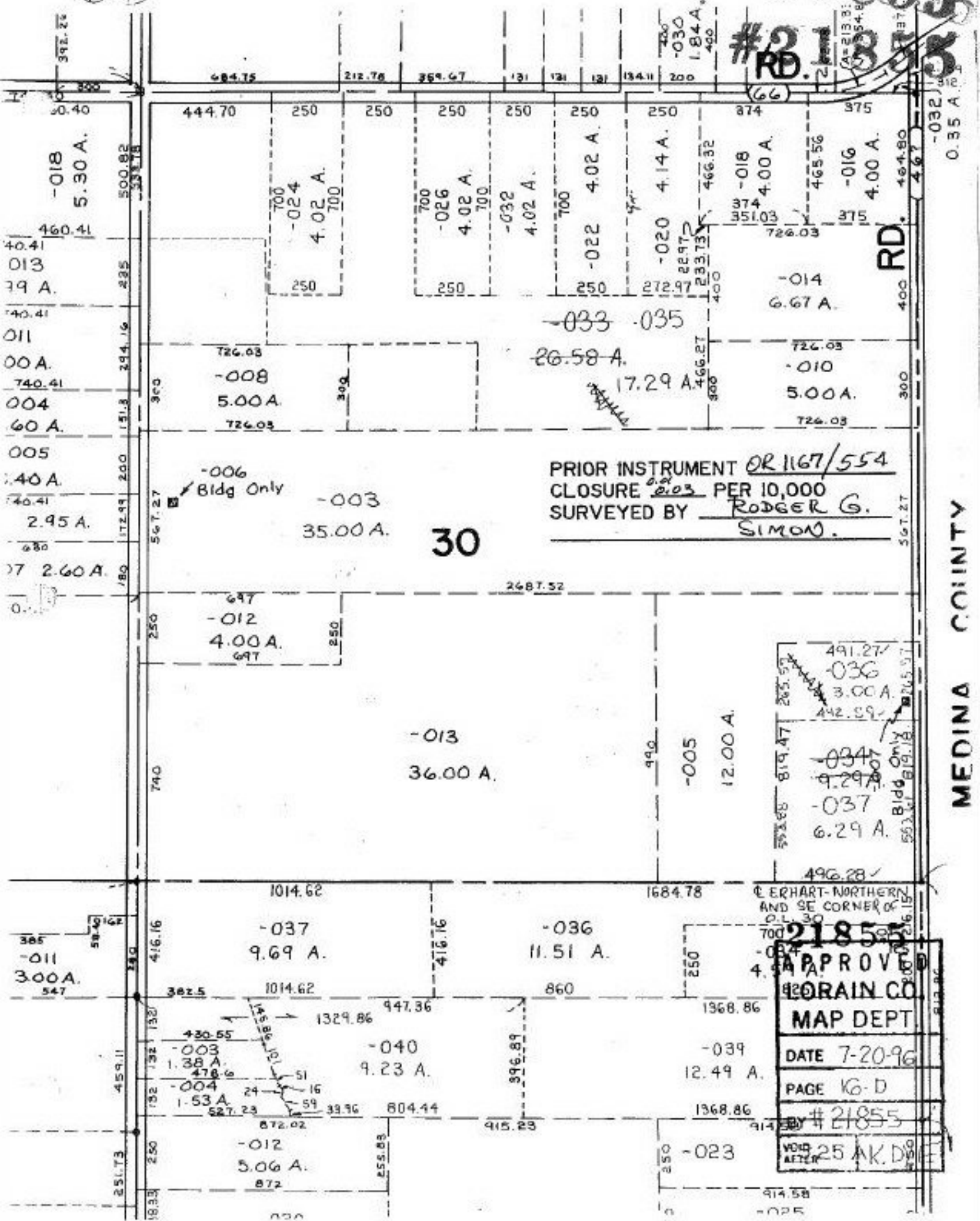


#241855  
#21855

16-D



PRIOR INSTRUMENT OR 1167/554  
CLOSURE 203 PER 10,000  
SURVEYED BY RODGER G. SIMON.

491.27  
-036  
3.00 A.  
442.59  
-034  
9.29 A.  
-037  
6.29 A.  
496.28

ERHART-NORTHERN  
AND SE CORNER OF  
P.L. 30  
**21855**  
**APPROVED**  
**ORAIN CO.**  
**MAP DEPT.**  
DATE 7-20-96  
PAGE 16-D  
BY #21855  
VOID  
AFTER 25 AK. DIST.

MEDINA COUNTY