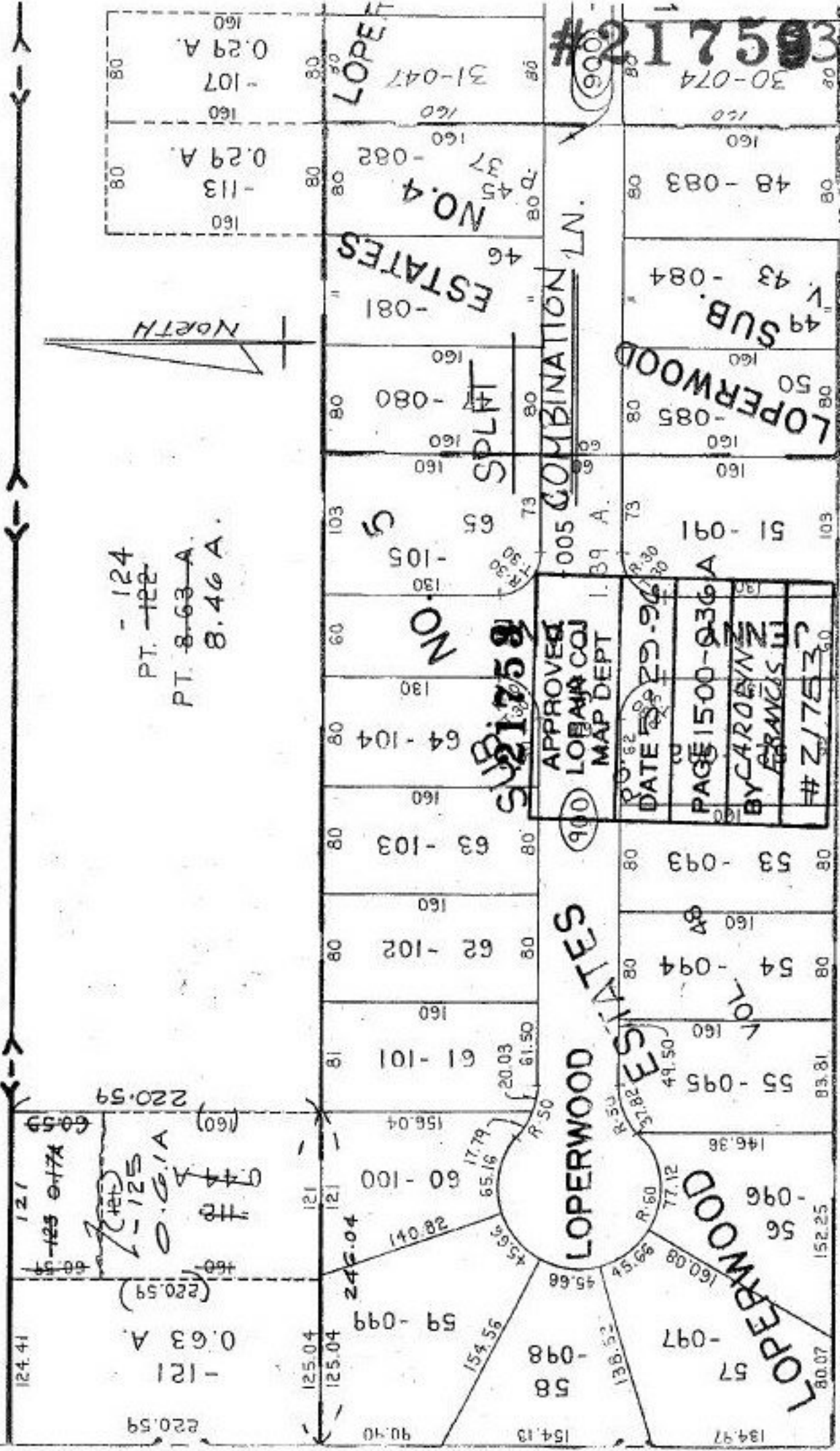


P.P. NO. 15-00-036-000-
 PRIOR INST: (122) CRV. 1177/742
 (-112) CRV 707/411
 CLOSURE: 1, 2, 1:INF.
 SURVEYED BY: DAVID L. ELWELL R. S. K. S. A.



- 124
 PT. -122
 PT. 8-63-A.
 8.46 A.

APPROVED	900
LOPERWOOD	
MAP DEPT	
DATE	29-96
PAGE	1500-036 A
BY	CAROLYN
	FRANCIS III
#	21753

30521753
 30-074