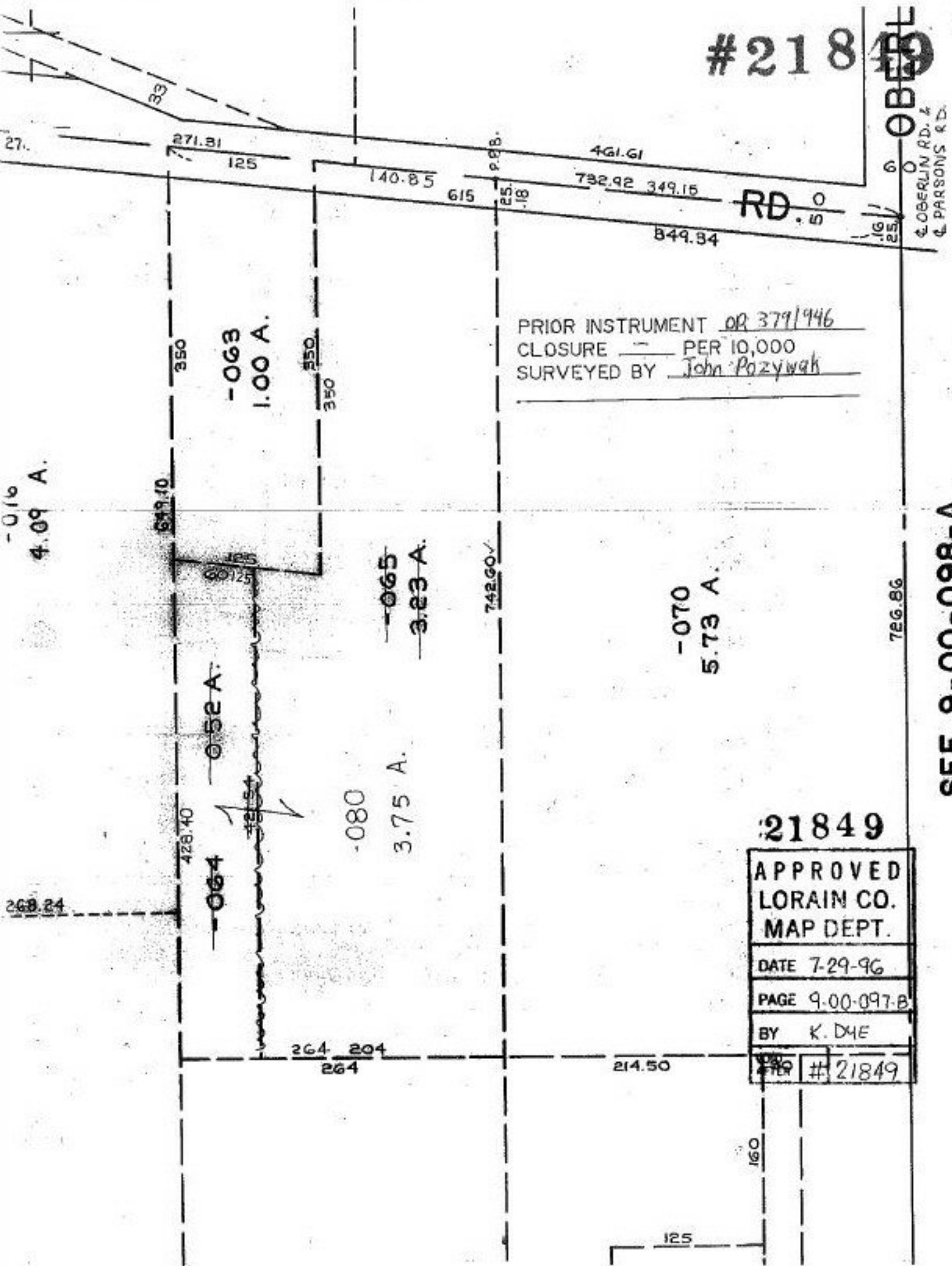


#218

OBERLIN RD. & PARSONS RD.



PRIOR INSTRUMENT OR 379/446
 CLOSURE PER 10,000
 SURVEYED BY John Poznyak

SEE 9-00-098-A

21849

APPROVED LORAIN CO. MAP DEPT.	
DATE 7-29-96	
PAGE 9-00-097-B	
BY K. DYE	
FILE #	21849