

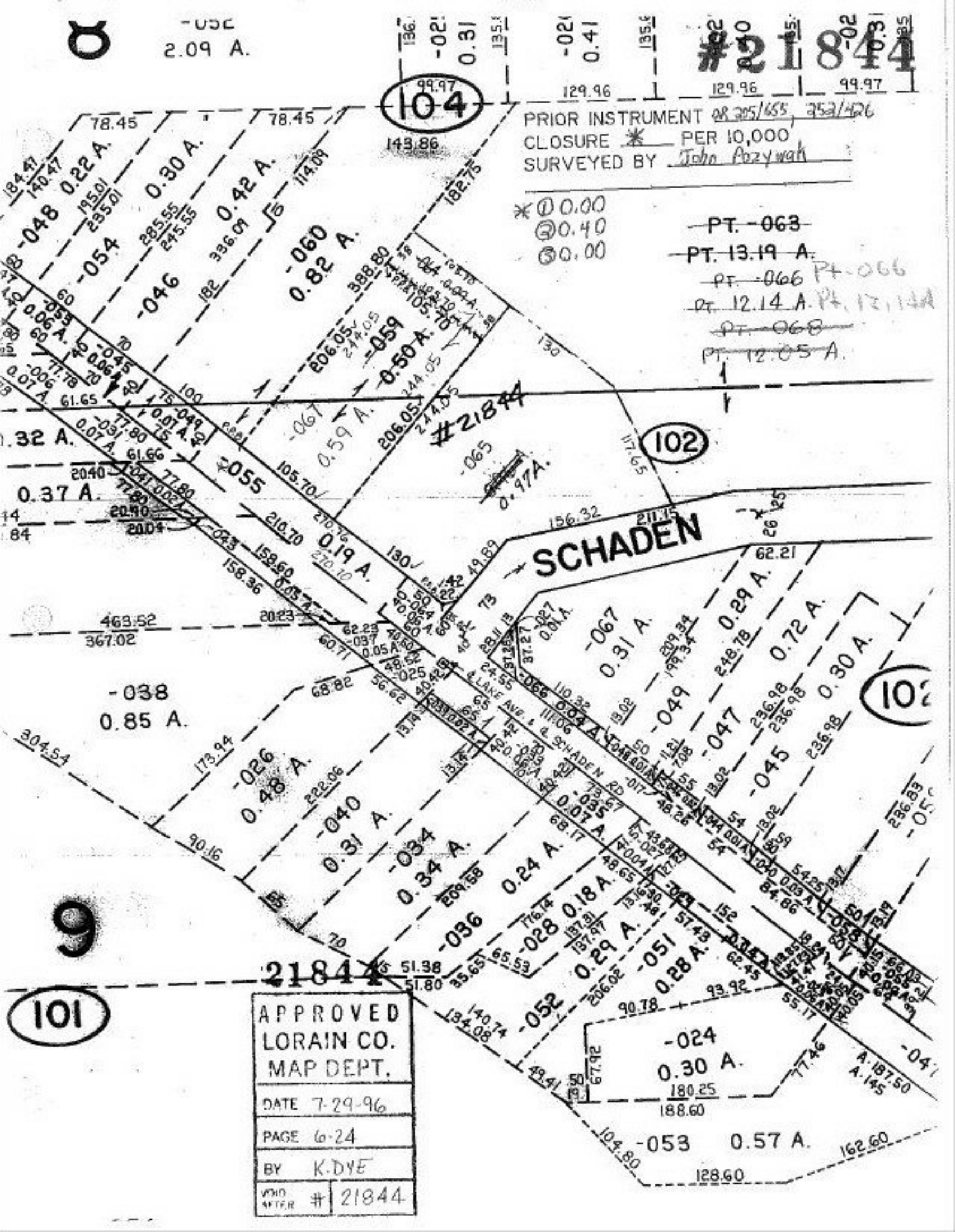
2.09 A.

#21844

PRIOR INSTRUMENT 28 205/655, 252/426
CLOSURE * PER 10,000
SURVEYED BY John Pozyski

- * ① 0.00
- ② 0.40
- ③ 0.00

- PT. -063
- PT. 13.19 A.
- PT. -066
- PT. 12.14 A.
- PT. -068
- PT. 12.05 A.



| | |
|-------------------------------------|---------|
| APPROVED LORAIN CO. MAP DEPT. | |
| DATE 7-29-96 | |
| PAGE 6-24 | |
| BY K. DYE | |
| VOID AFTER | # 21844 |