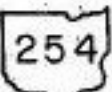


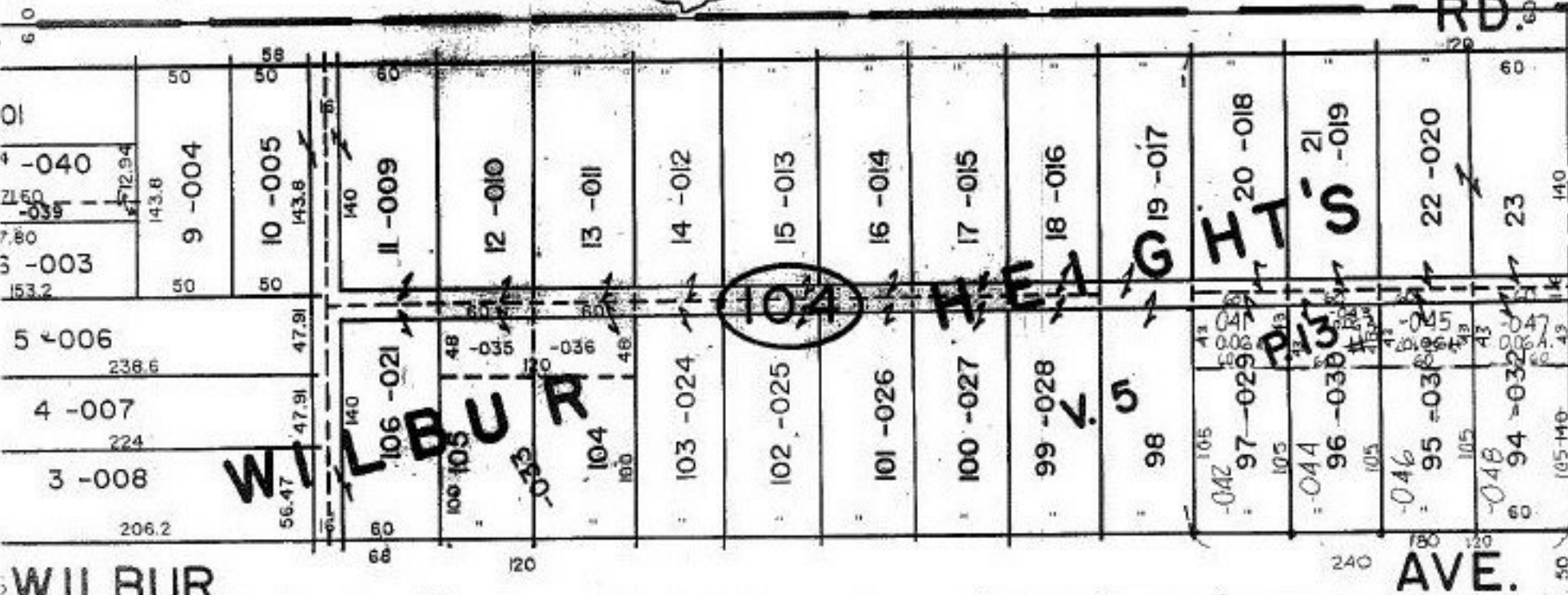
SEE 3-00-III-A



254

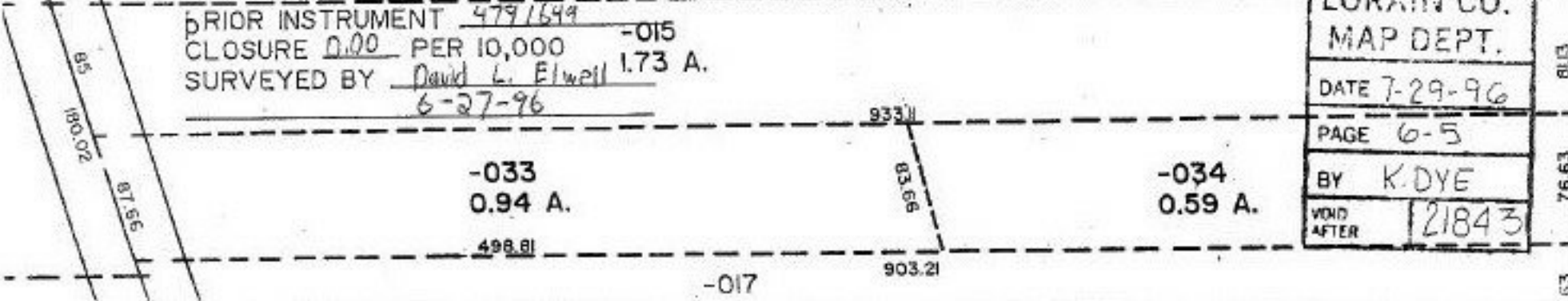
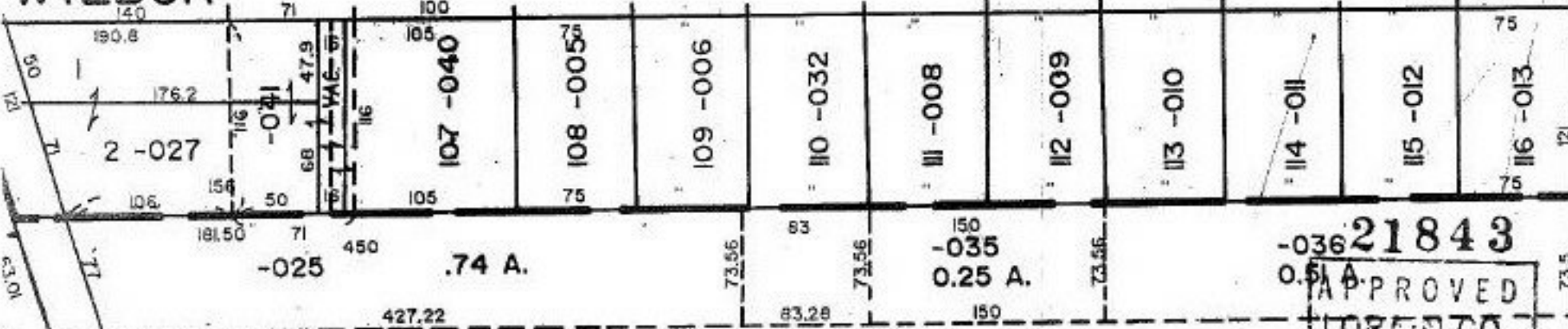
RD.

ST.



WILBUR

AVE.



PRIOR INSTRUMENT 4791649  
 CLOSURE 0.00 PER 10,000  
 SURVEYED BY David L. Elwell  
6-27-96

21843  
 APPROVED  
 LORAIN CO.  
 MAP DEPT.  
 DATE 7-29-96  
 PAGE 6-5  
 BY K. DYE  
 VOID AFTER 21843

GLOBE  
 50  
 87 167