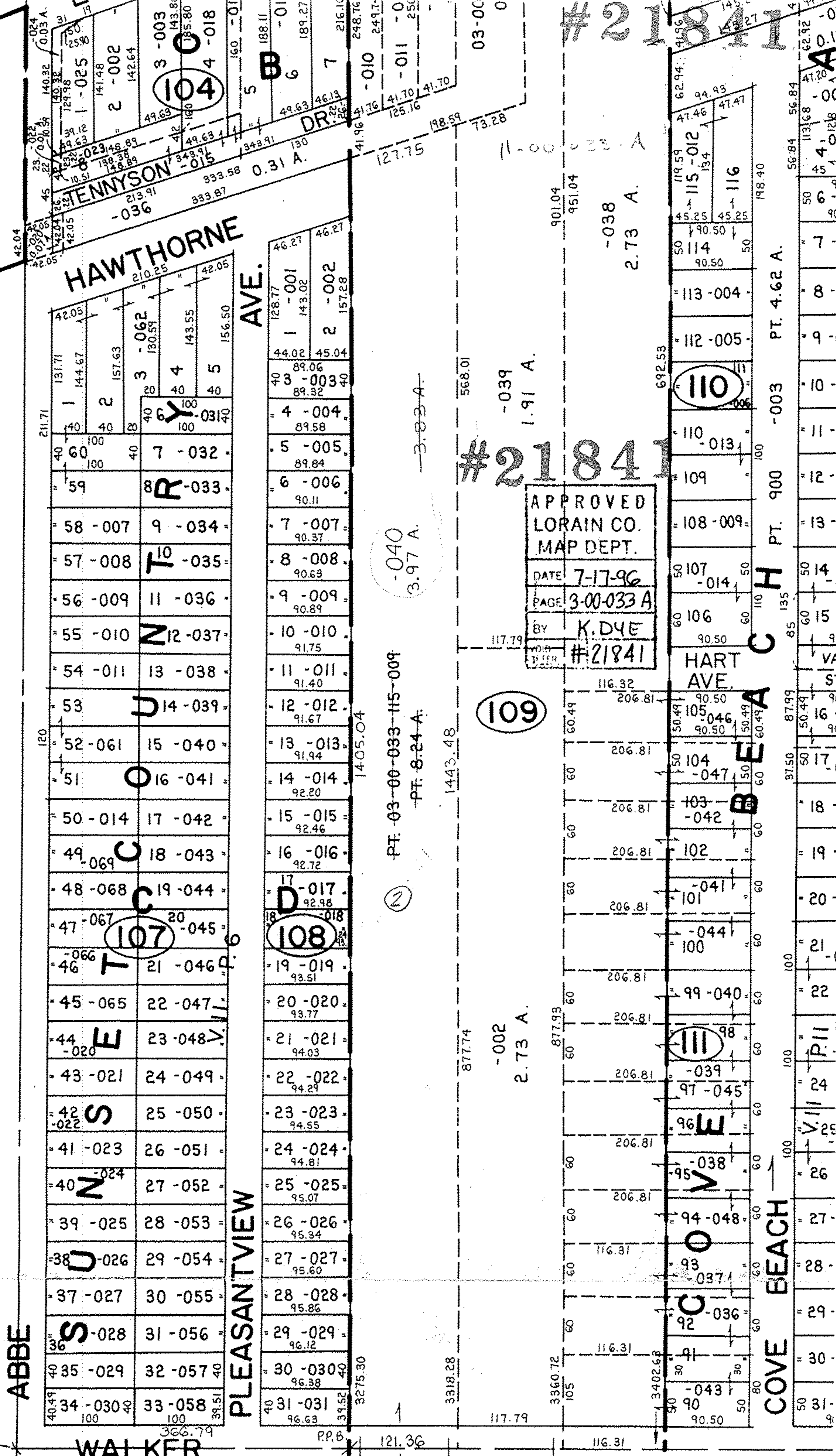


SEE 3-00-034-A

SEE 3-00-033-B



APPROVED
LORAIN CO.
MAP DEPT.
DATE 7-17-96
PAGE 3-00-033 A
BY K. DYE
#21841

#21841

#21841

COVE BEACH

ABBE

HAWTHORNE AVE.

PLEASANTVIEW AVE.

WALKER

HART AVE.

ABBE RD. & SW CORNER O.L. 33

SEE 3-00-033-B