

13-F

#21836

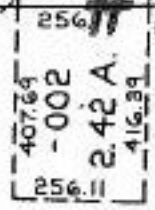
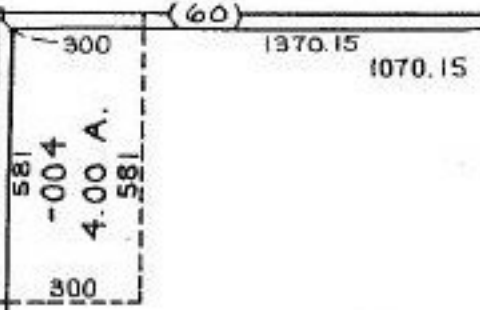
303

BAIRD RD AND
OF STATE RT 303

RD.
(60)

3584.21

300



3

-005
96.58 A.

-004
45

PRIOR INSTRUMENT 975/394
 CLOSURE 0.00 PER 10,000
 SURVEYED BY Bodger G. Simon

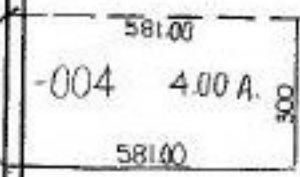
-001

-001
37.00A.

-003
10.00 A.

-002
30.00A.

21836



16

-005
~~-003~~
~~30.00A.~~
 26.00 A.

APPROVED LORAIN CO. MAP DEPT	
DATE	7-16-96
PAGE	13-F
BY	K.DYE
21836	