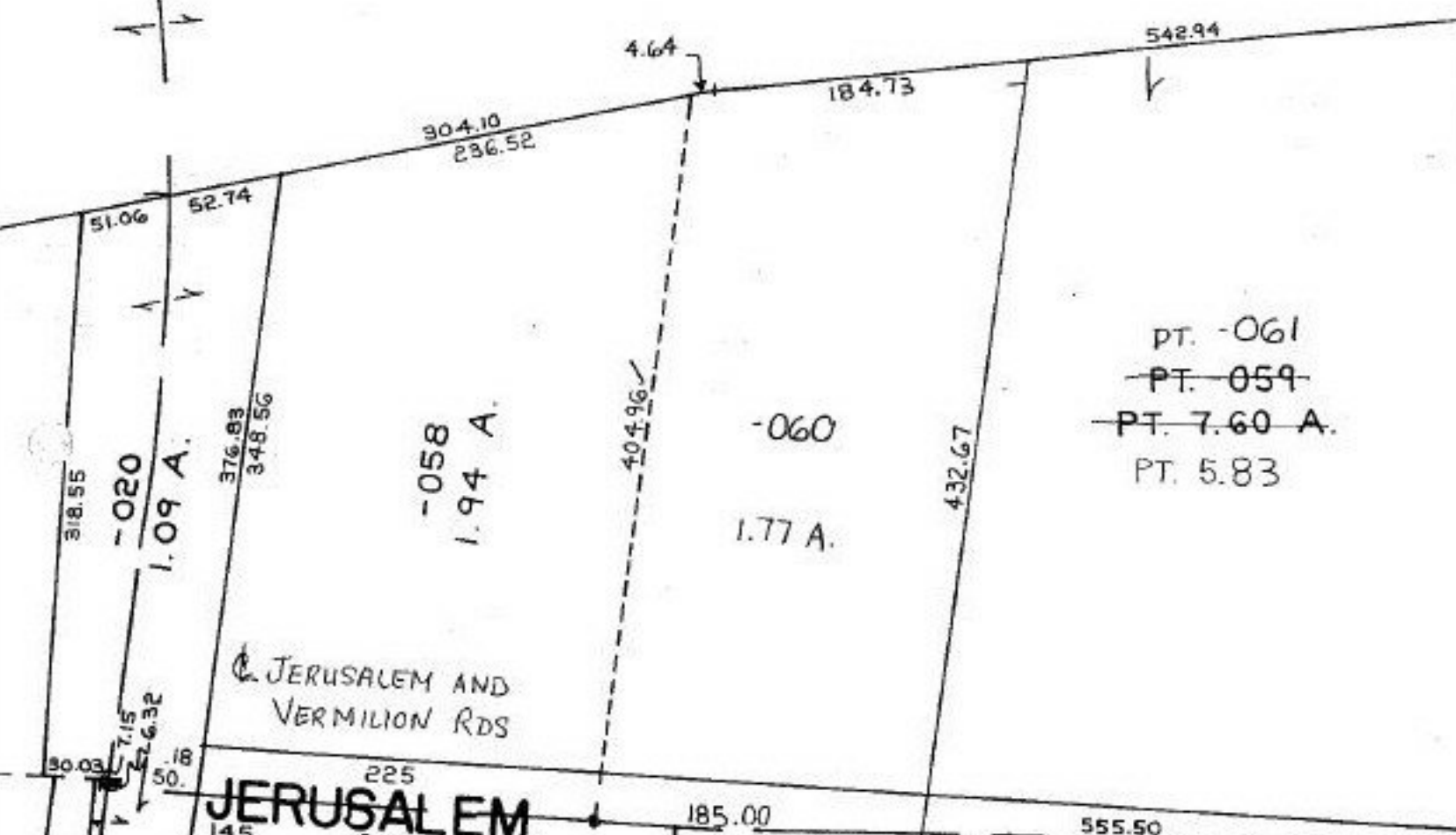
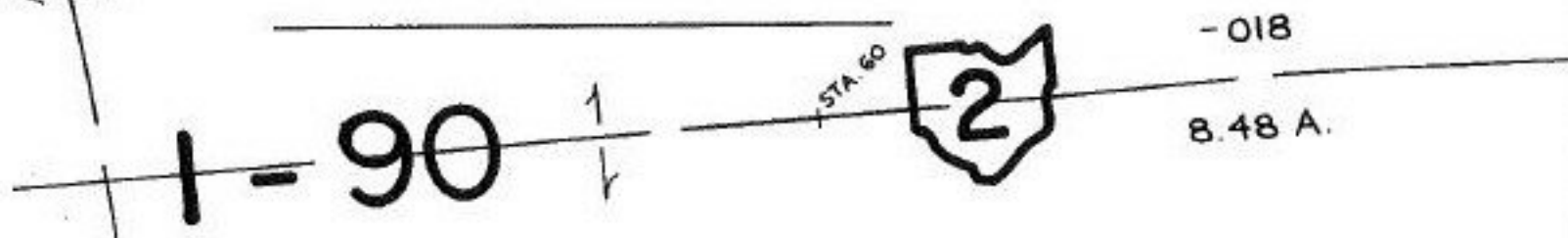


#21833

PRIOR INSTRUMENT 535/356, 306/124
CLOSURE 0.04 PER 10,000
SURVEYED BY Michael G. Hura



JERUSALEM AND VERMILION RDS

JERUSALEM

PT. -061
~~PT. 059~~
~~PT. 7.60 A.~~
PT. 5.83



#21833

APPROVED LORAIN CO. MAP DEPT
DATE 7-16-96
PAGE 1-00-031-B
BY K. DYE
35 A: 21833

-037
1.97 A.