

#21827

SEE 14-E

5 A.

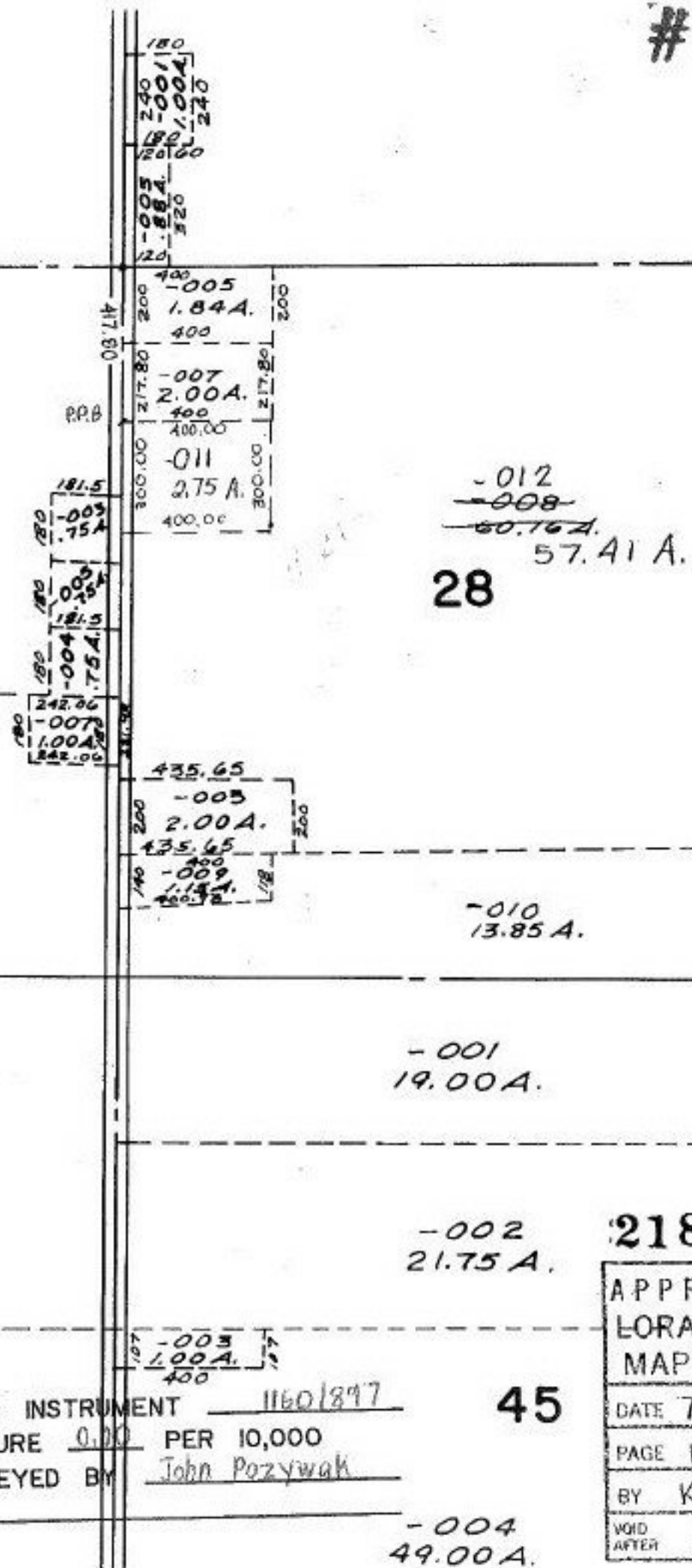
9

08  
00 A.

01  
00 A.

4

2  
A.



-012  
~~-008~~  
~~60.76 A.~~  
 57.41 A.  
 28

-010  
 13.85 A.

-001  
 19.00 A.

-002  
 21.75 A.

21827

APPROVED
LORAIN CO.
MAP DEPT.
DATE 7-15-96
PAGE 13-H
BY K.DYE
VOID AFTER 21827

PRIOR INSTRUMENT 11601897  
 CLOSURE 0.00 PER 10,000  
 SURVEYED BY John Poznywak

45

-004  
 49.00 A.