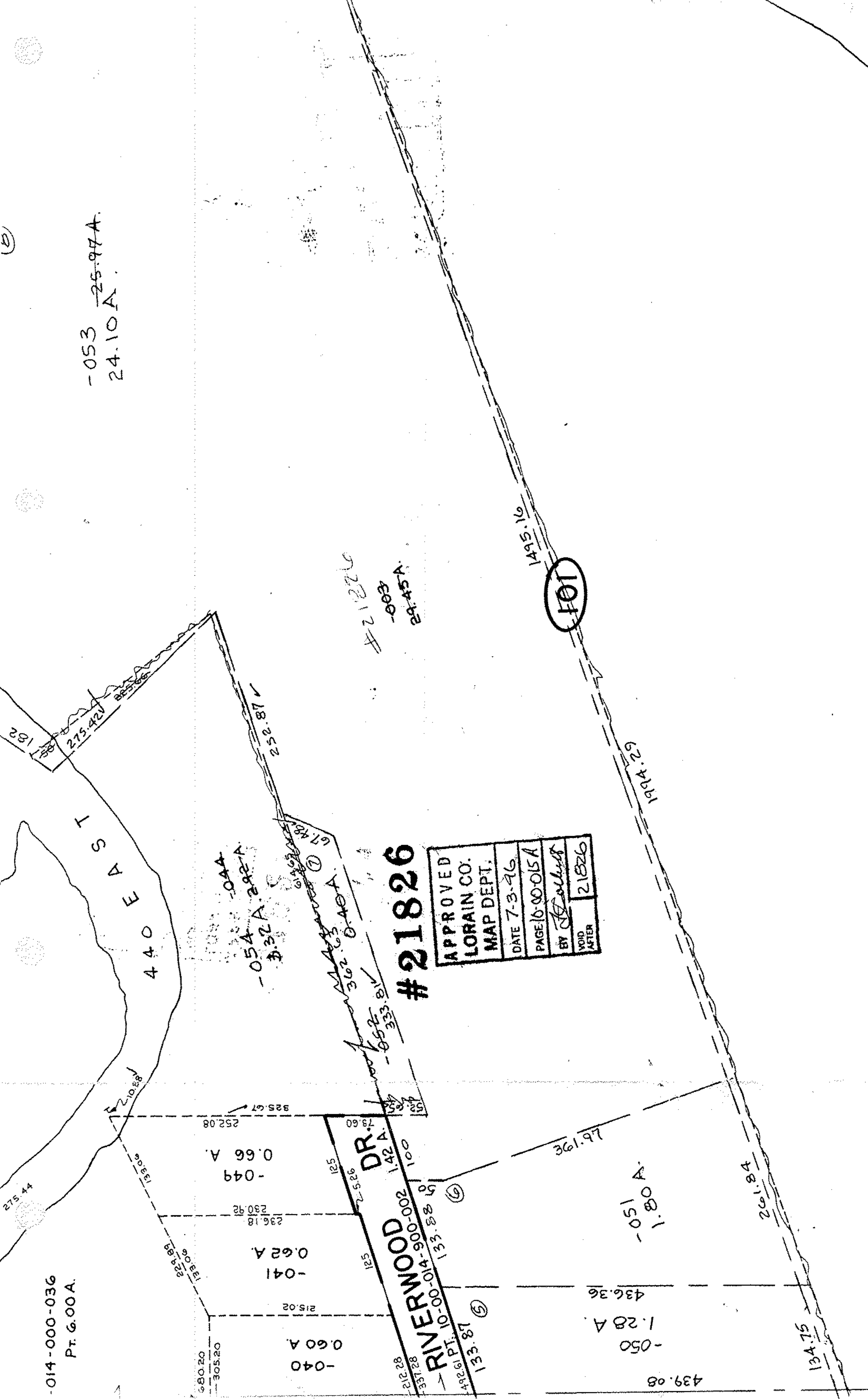


-053 25.97A  
24.10A

-014-000-036  
PT. G.00A.



#21826

|                      |
|----------------------|
| APPROVED             |
| LORAIN CO.           |
| MAP DEPT.            |
| DATE 7-3-96          |
| PAGE 10-00-015A      |
| BY <i>J. Collins</i> |
| VOID AFTER 21826     |

DR.

RIVERWOOD

-051 A  
1.80 A

-050  
1.28 A

439.08

134.75

-049  
0.66 A

-041  
0.62 A

-040  
0.60 A

-054 A 292 A  
3.32 A

362.63  
0.40 A

PT. 10-00-014-900-002  
133.88

133.87

161.92

261.84

1994.29

1995.16

101

-003  
29.45 A

#21826

252.87

67.48  
61.52

252.08  
236.18  
230.92

125  
142 A  
100

210.88

139.93  
229.89

680.20  
305.20

182

WEST

440

275.44

275.42  
285.66

(B)

(C)

(D)

(E)