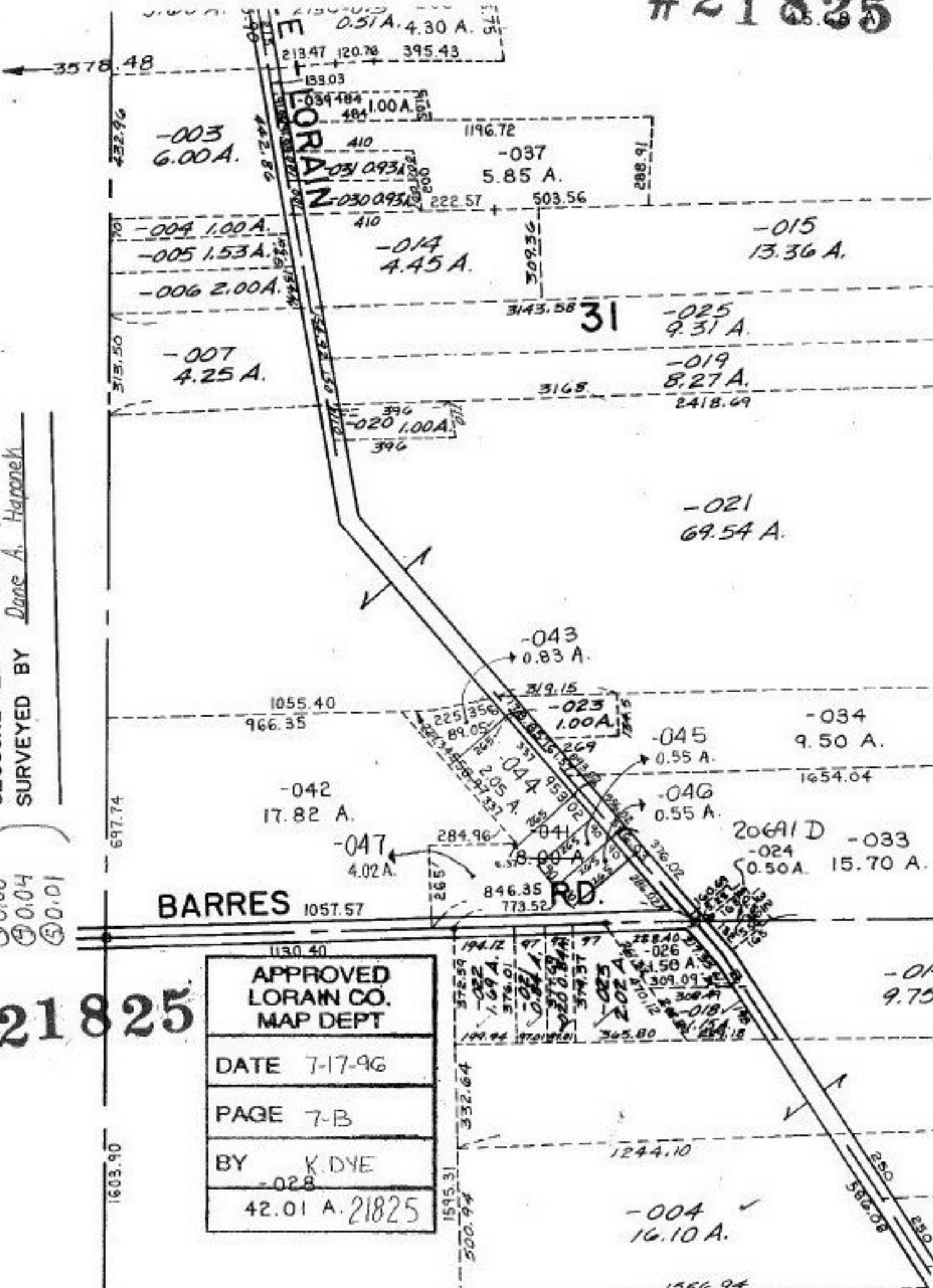


#21825



PRIOR INSTRUMENT OR 1053/832
 CLOSURE PER 10,000
 SURVEYED BY Dan A. Hapanek

- ① 0.00
- ② 0.00
- ③ 0.00
- ④ 0.04
- ⑤ 0.01

#21825

APPROVED LORAIN CO. MAP DEPT
DATE 7-17-96
PAGE 7-B
BY K.DYE
-028 42.01 A. 21825

1603.90

1595.31

-004 ✓
16.10 A.

1566.94

-014
9.75

2061 D
-024 0.50 A.
-033 15.70 A.

-034
9.50 A.
1654.04

-045
0.55 A.
-046
0.55 A.

-042
17.82 A.

-047
4.02 A.

846.35
773.52
RD.

BARRES 1057.57

1130.40

1244.10

332.64

372.59

284.96

1055.40
966.35

319.15

3168

3143.58 31

410

410

410

697.74

622.24

3578.48

442.86

442.86

442.86

442.86

442.86

442.86

442.86

442.86

442.86

442.86

442.86

442.86

442.86

442.86

442.86

442.86

442.86

442.86

442.86

442.86

442.86

442.86

442.86