

#21820

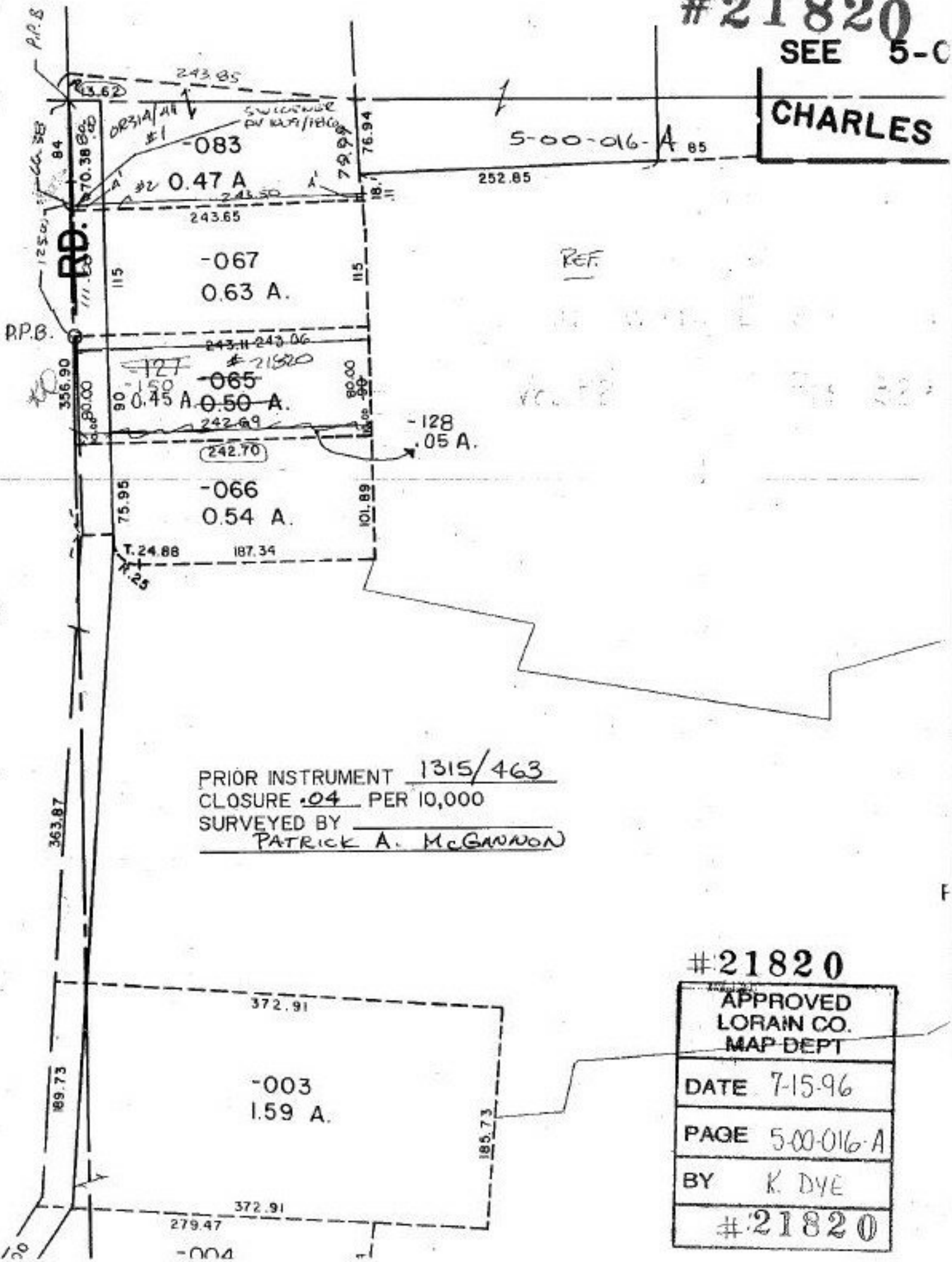
SEE 5-C

CHARLES

5-00-016-A 85

252.85

REF.



PRIOR INSTRUMENT 1315/463
 CLOSURE .04 PER 10,000
 SURVEYED BY PATRICK A. MCGANNON

#21820

APPROVED LORAIN CO. MAP DEPT
DATE 7-15-96
PAGE 5-00-016-A
BY K. DYE
#21820