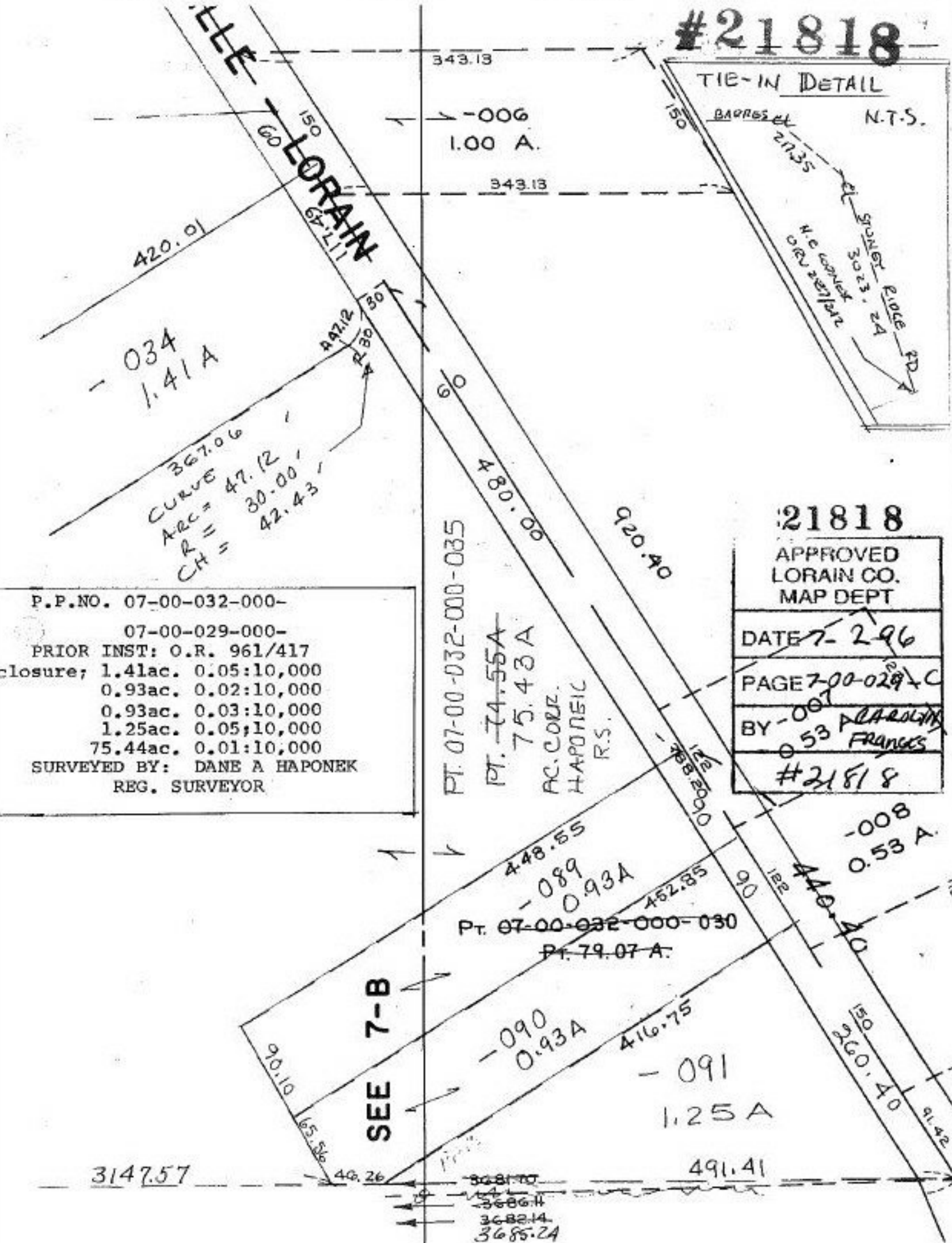


#21818

TIE-IN DETAIL

N.T.S.



P.P.NO. 07-00-032-000-

07-00-029-000-

PRIOR INST: O.R. 961/417  
 closure; 1.41ac. 0.05:10,000  
 0.93ac. 0.02:10,000  
 0.93ac. 0.03:10,000  
 1.25ac. 0.05:10,000  
 75.44ac. 0.01:10,000

SURVEYED BY: DANE A HAPONNEK  
 REG. SURVEYOR

21818

APPROVED LORAIN CO. MAP DEPT

DATE 7-2-96  
 PAGE 7-00-029-C  
 BY 001 PLAROLIN  
 053 FRANCES  
 #21818

3147.57

3681.70  
 3686.4  
 3682.14  
 3685.24

491.41