

#21817

21811

2141.04

2139.17

-003
7.70A 7.83A

68.66 CHS.

80.45 -011 1595.88 3.05A

146.96

09
0 A
0

-013 8.18A

1308.09

-014 8.85A

~~-012~~ 28.95A

-003
82.00A

-015 4.92A

ACCORD. 9.81A
R. SIMON, R.S.
1117.31 2127.84

-024 1101.38 3.79 A

-023 1098.11 3.45 A

1095.21

SEE DETAIL

-017 49.75A

-007 7.40 A RIVER
-006 4.93 A
-005 4.00 A
1016

-020 1025 7.04 A

-021 6.96 A

-022 1522.63

-027 1525.10

-019 6.14 A

865

-006 1090 5.00 A

5.00 A

5.00 A

PAGE 10-C

BY CAROLYN FRANCIS

#21817 -010

24.00A

5

21817

6

7

8

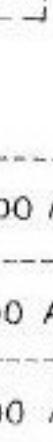
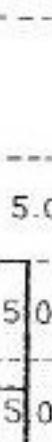
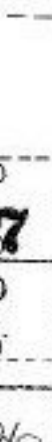
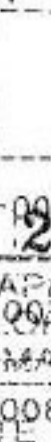
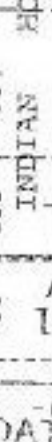
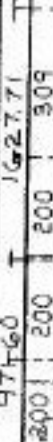
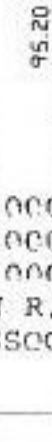
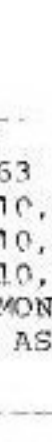
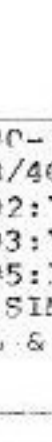
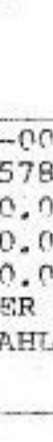
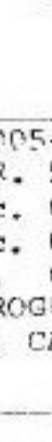
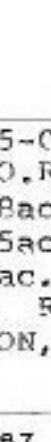
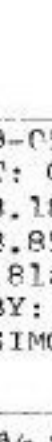
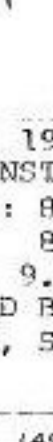
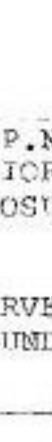
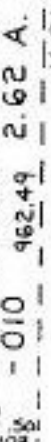
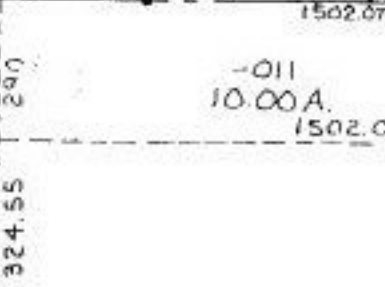
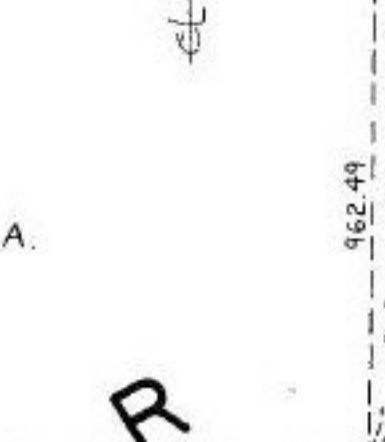
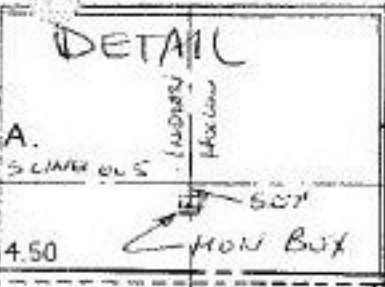
P.P.NO. 19-05-005-000-
PRIOR INST: O.R. 578/463
CLOSURE: 8.18ac. 0.02:10,000
8.85ac. 0.03:10,000
9.81ac. 0.05:10,000
SURVEYED BY: ROGER SIMON R.S
LAINDON, SIMON, CAHL & ASSOC.

APPROVED
LOHAIN CO.
MAP DEPT

PAGE 10-C
BY CAROLYN
FRANCIS

#21817 -010

24.00A



324.55

-011 10.00A

1502.07

-014 16.84 A

2286.92

1496.87

788.18

-013

5.24 A

784.85

317.33

290.01

290.01

290.01

317.33

971.60

971.60

971.60

971.60

1090

1090

1090

1090

1211.63

1211.63

1211.63

1211.63

15.25 CH.