

#21814

107

474.0

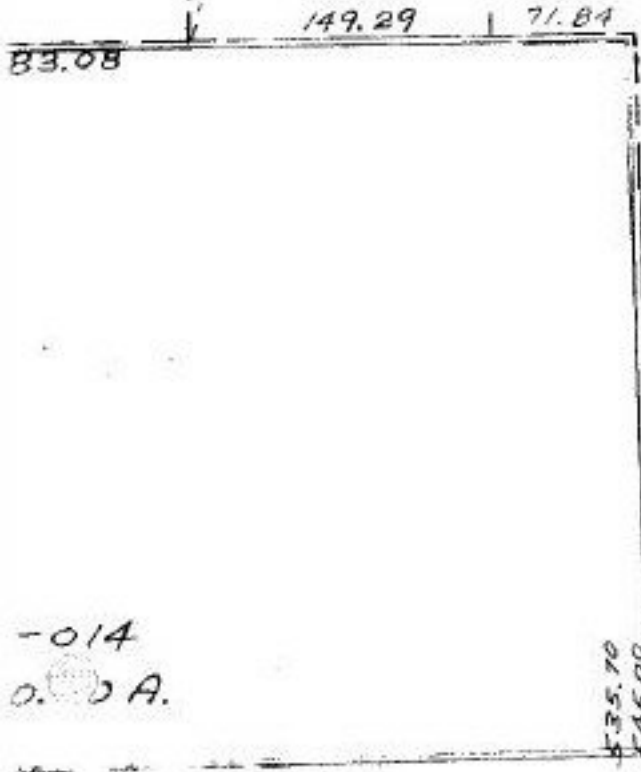
MONROE VACATED -  
99.63 SEE D.V.

-044  
0.33 A.

PT. -045  
PT. II. 45 A.

-062  
PT. -045  
PT. II. 45 A.  
11.34 A.

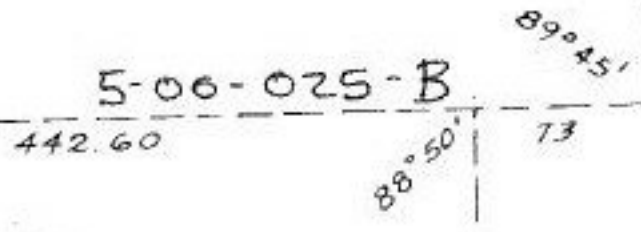
SEE 5-00-036-A



LINE

#21814

APPROVED	
LORAIN CO.	
MAP DEPT.	
DATE 6-27-96	
PAGE 5-00-025-B	
BY <i>Ballard</i>	
VOID AFTER	21814



-062  
PT. -045  
PT. II. 45 A.  
11.34 A.