

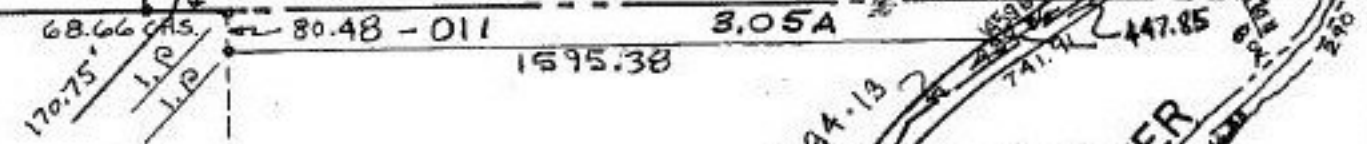
#21811

-005
55.00 A

19-06-105-000-

AC. CORR. PER LAUNDON SIMON CAHL ASSOC
0.04:10,000

-003 -003 2141.04
2139.17
Oc. Coll. 7.83A - 7.70A



5

-012
-003
32.00 A
28.95 A

1117.31

-024 1101.38 3.79 A.

-023 1098.11 3.45 A.

954.50

-017 49.75 A.

6

C

7

A

P.P. NO. 19-05-005-000- 19-06-105-000
CLOSURE: 0.04:10,000
PRIOR INST. O.R. 578/463
SURVEYED BY: LAUNDON, SIMON, CAHL ASSOC.

#21811

APPROVED LORAIN CO. MAP DEPT	5 00 A.	200
DATE 7-1-96 1090	5 00 A.	200
PAGE 19-C 1090	5 00 A.	200
BY CAROLYN FRANCIS	127.63	
#21811		

R