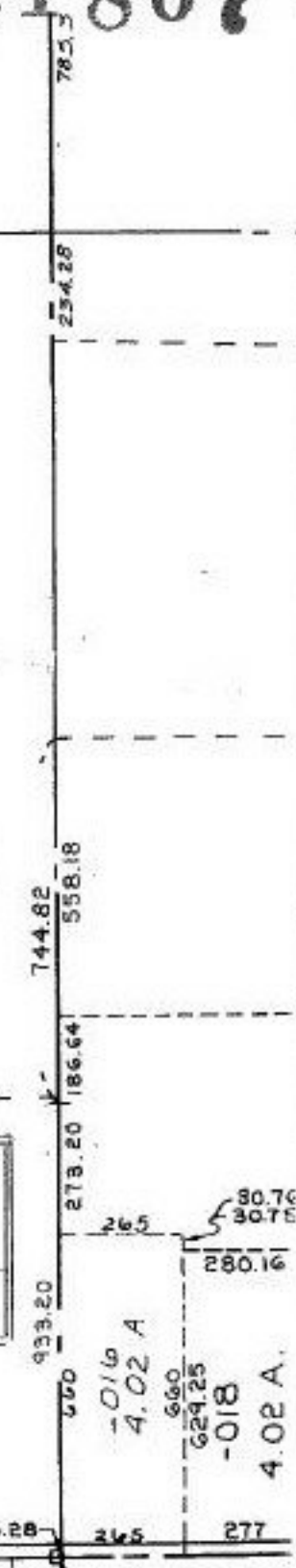
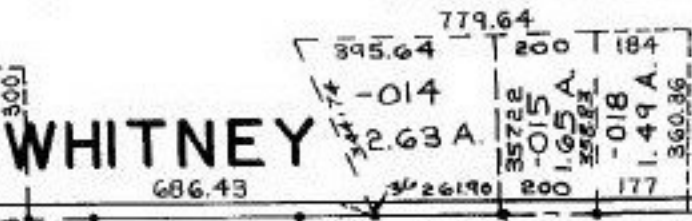
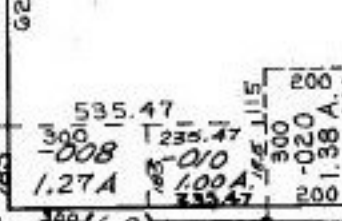
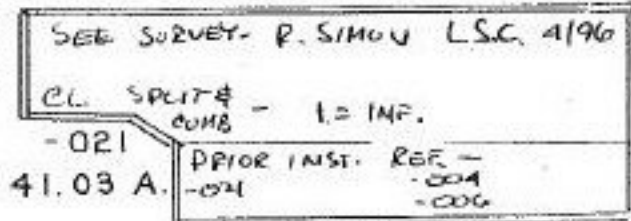
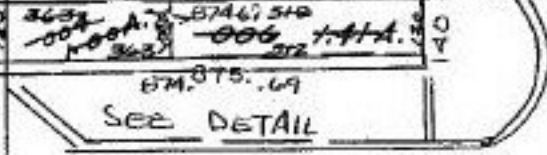
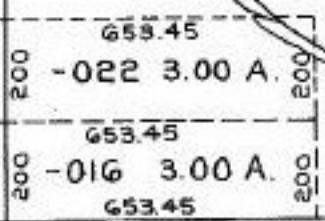
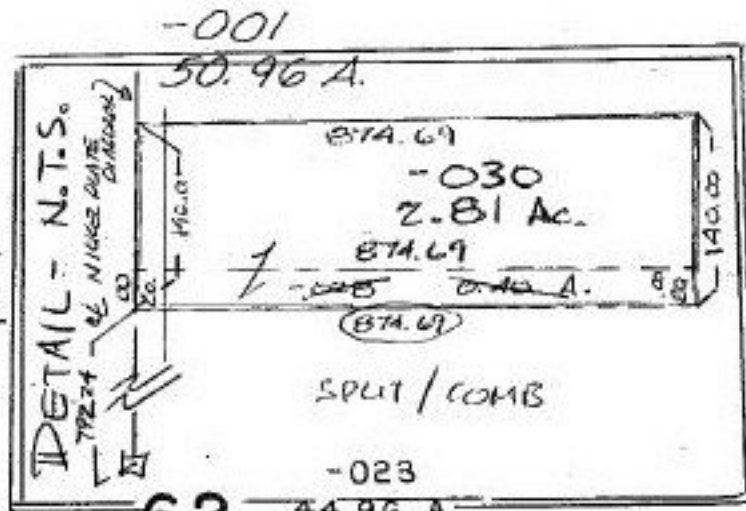


#21807

-003  
50.96 A.

406.14  
-002  
2.00 A.  
409.14



-004  
6.15 A.  
472.76

WHITNEY

SPLIT/COMB  
#21807

APPROVED	
LORAIN CO.	
MAP DEPT.	
DATE 7-1-96	
PAGE 15-E	
BY	T. McMan
VOID AFTER	21807

A