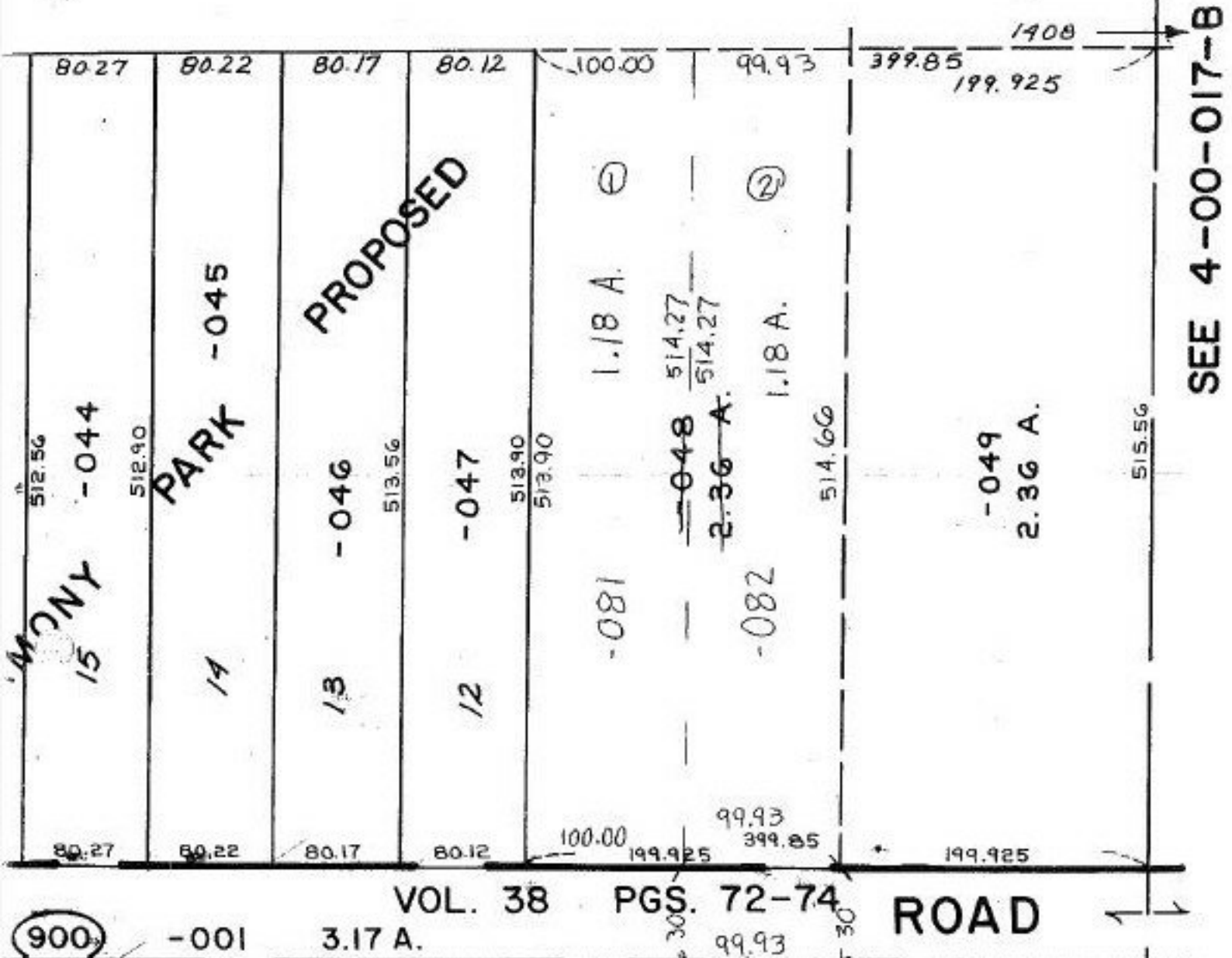


#21798



SEE 4-00-017-B

#21798

#1 PRIOR INSTRUMENT DV 1096/37
 CLOSURE 0.08 PER 10,000
 SURVEYED BY John Poznywak

#2 PRIOR INSTRUMENT DV 1096/37
 CLOSURE 0.11 PER 10,000
 SURVEYED BY John Poznywak

E AVON BELDON RD. AND
 WEBER RD
 #21798

APPROVED LORAIN CO. MAP DEPT	
DATE 7-15-96	
PAGE 4-00-017-A	
BY K. DVE	
#21798	