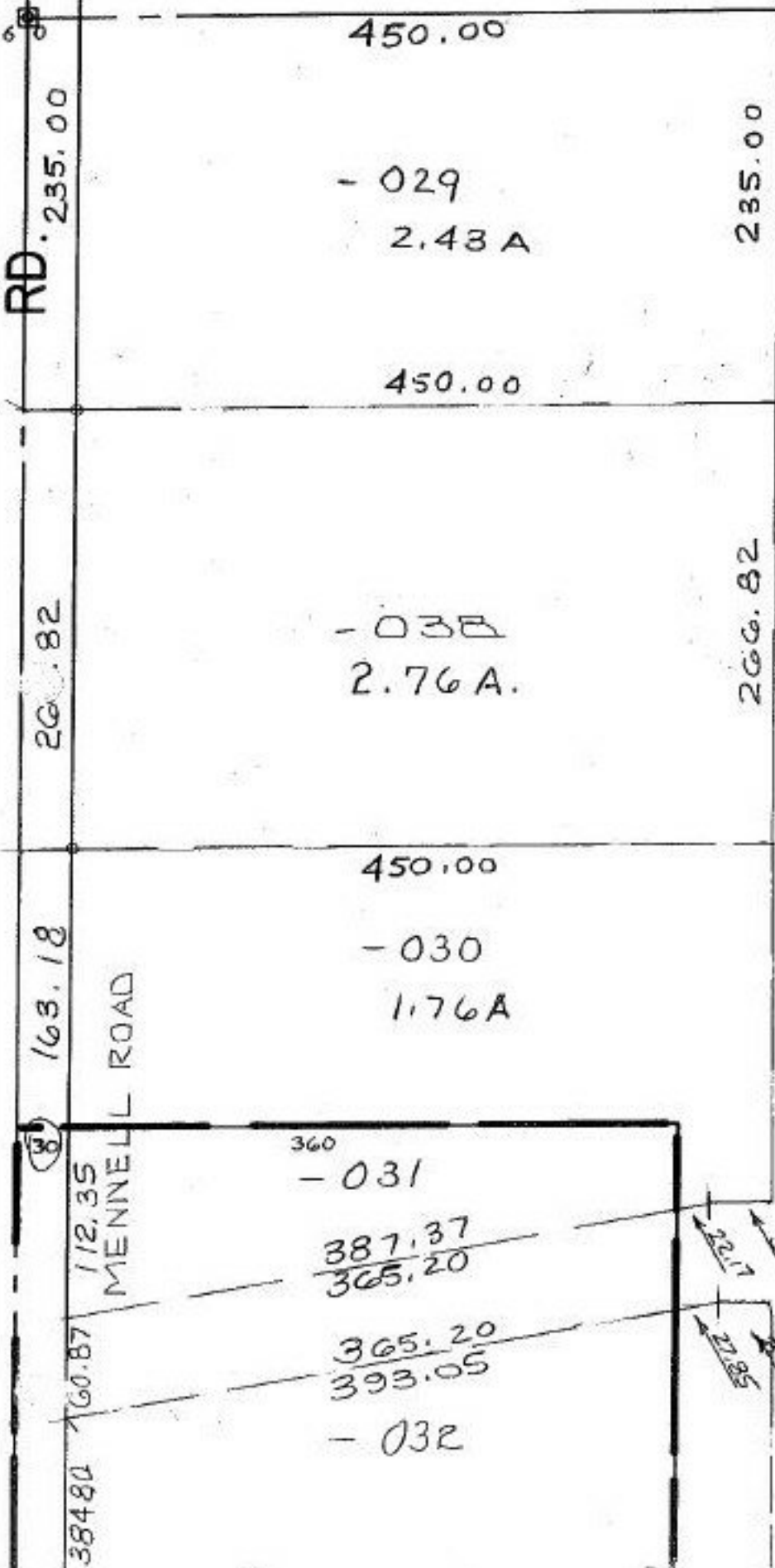


#21792

SEE 16.



PT - 039
PT - 037
PT. 100.18A.
97.42A.

P.P.NO. 16-00-064-000-
PRIOR INST: O.R.1079/647
CLOSURE: 1:INF.
SURVEYED BY: THOMAS A.
CUNNINGHAM
REG. SURVEYOR

21792

APPROVED
LORAIN CO.
MAP DEPT

DATE 6-6-96

PAGE 16-00-064A

BY CAROLYN
FRANCIS

#21792

