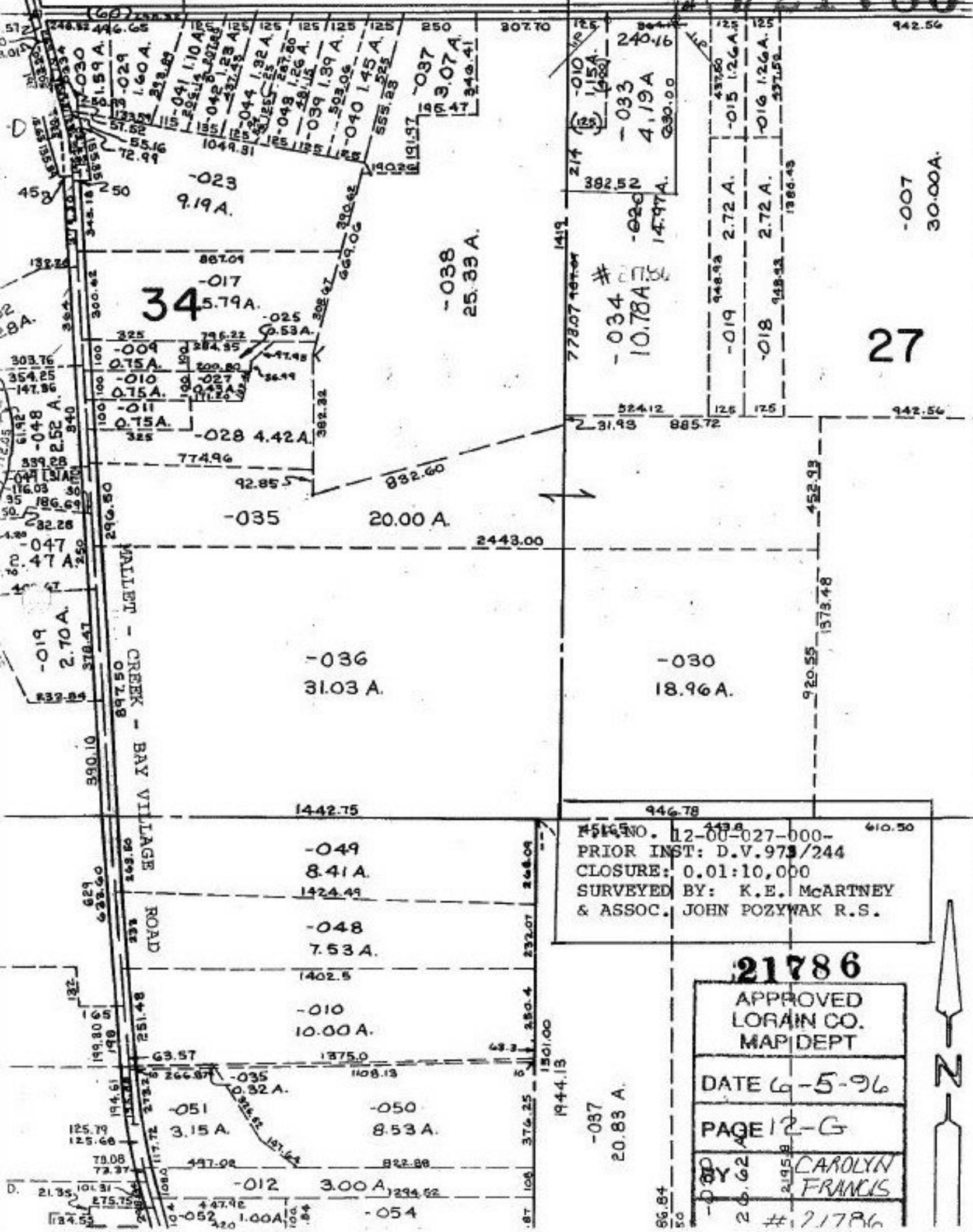


# SQUIRE

# #21786



45165 NO. 12-00-027-000- 610.50  
 PRIOR INST: D.V. 973/244  
 CLOSURE: 0.01:10,000  
 SURVEYED BY: K.E. McARTNEY  
 & ASSOC. JOHN POZYWAK R.S.

**21786**

APPROVED  
LORAIN CO.  
MAP DEPT

DATE 6-5-96

PAGE 12-G

BY 62 CAROLYN  
FRANCIS

20.83 A. #21786

