

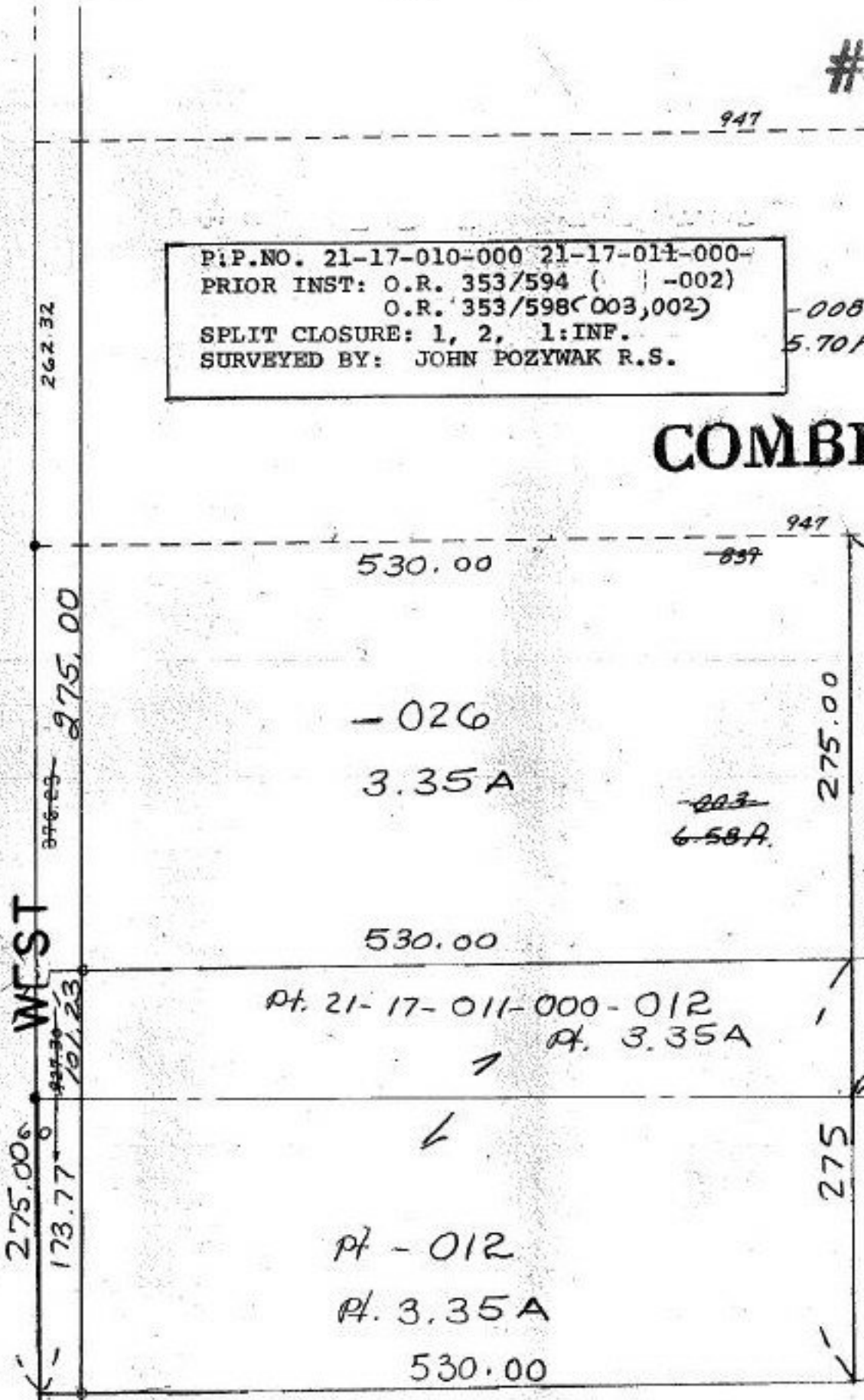
#21783

947

P: P.NO. 21-17-010-000 21-17-011-000-
 PRIOR INST: O.R. 353/594 (| -002)
 O.R. 353/598(003,002)
 SPLIT CLOSURE: 1, 2, 1:INF.
 SURVEYED BY: JOHN POZYWAK R.S.

-008
5.70A.

COMBINATION



~~309.00~~
2263.69

Pt 21-17-011-000-
~~-027~~
~~-014~~
~~2.00A~~
 Pt 44.99A

309.00

SEE 2

21783

APPROVED
 LORAIN CO.
 MAP DEPT

DATE 6-3-96

PAGE 21-17-010A

BY CAROLYN
 FRANCIS

#21783

SPLIT

W. PT. LOT 10 TR. 17

WEST



95

10-A