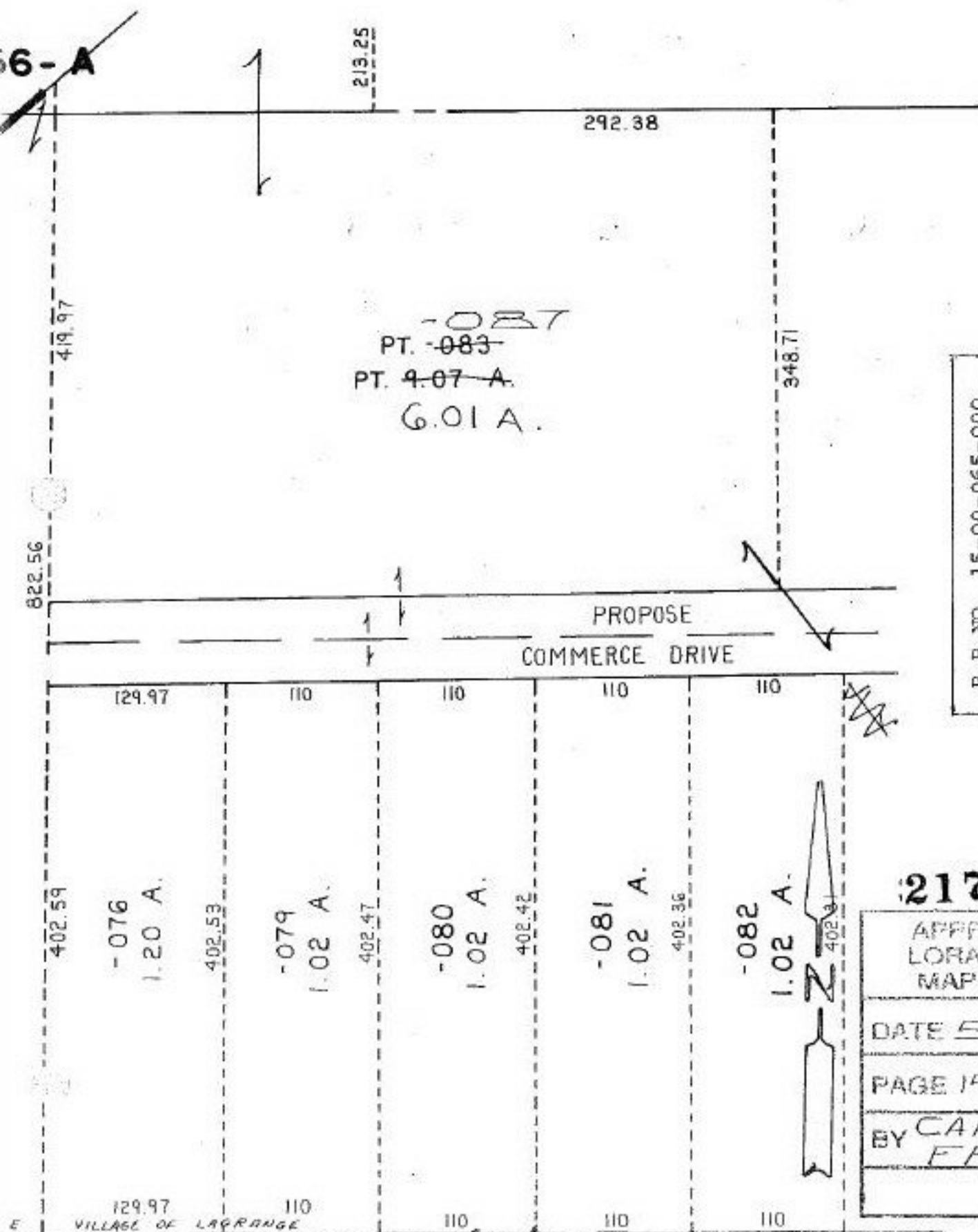


#21781



~~PT. -083~~
 -087
 PT. 9-07 A.
 6.01 A.

P.P. NO. 15-00-065-000
 PRIOR INST: O.R. 861/367

21781

APPROVED
 LORAIN CO.
 MAP DEPT

DATE 5-31-76

PAGE 15-00-065A

BY CAROLYN
 FRANCIS