

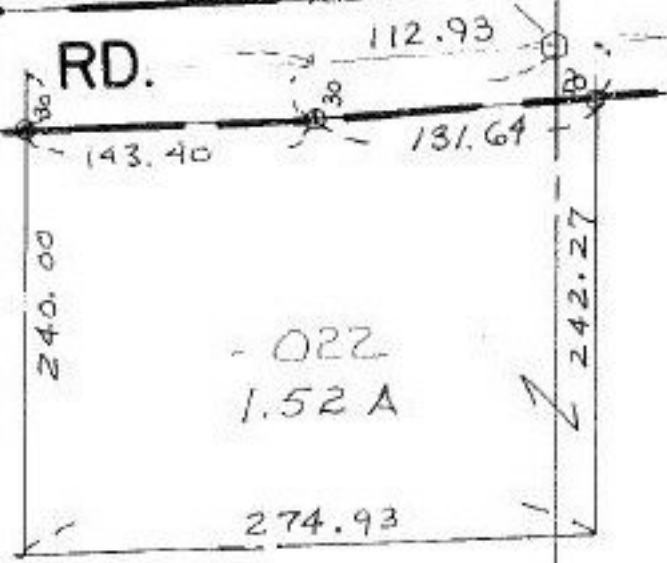
#21779

CURVE
CH 131.63
R = 3849.72
Delta = 1° 57' 32"

POINT ON TANGENT
1/2 RD.
L = 2257
R = 3849.72

(900) -001
STICK RD. 660.62
2.24 A. 90468

RD.

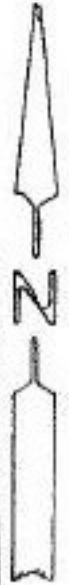


- 022
1.52 A

PT. - 023
PT. - 011
PT. ~~82.68A~~
8127A

P.P. NO. 01-00-073-000- 01-00-074-000
PRIOR INST: O.R. 865/307 (016)
O.B. 394/334 (011)
CLOSURE: 0.25:10,000 1.52ac.
SURVEYED BY: CHARLES WARYU REG. SURV.

21779
APPROVED
LORAIN CO.
MAP DEPT
DATE 5-24-96
PAGE 1-00-074-B
BY CAROLYN
FRANCIS
21779



SEE 1-00-073