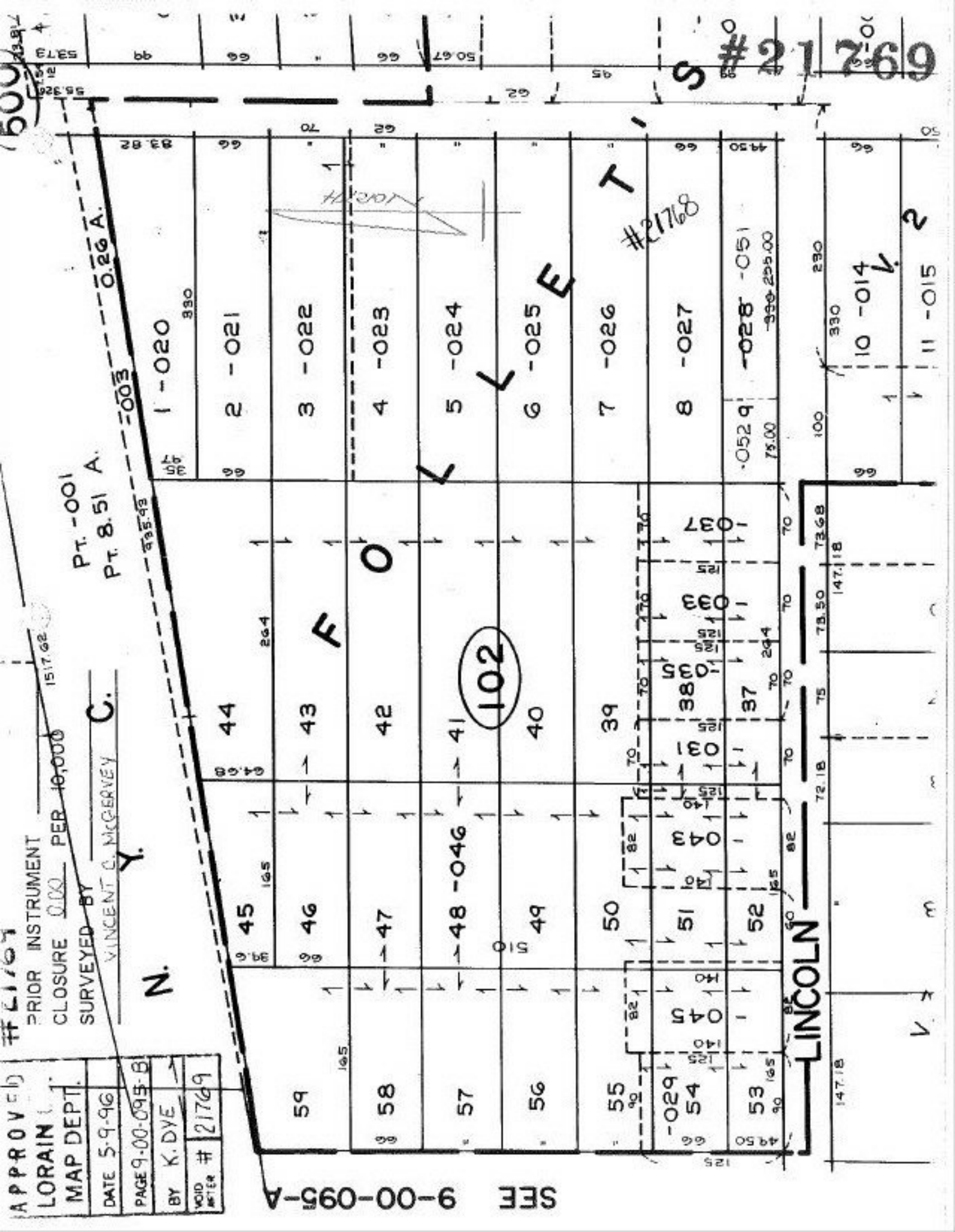


APPROVED  
LORAIN  
MAP DEPT.  
DATE 5-9-96  
PAGE 9-00-095-B  
BY K. DYE  
VOID AFTER # 21769

# 21769  
PRIOR INSTRUMENT  
CLOSURE 0.00 PER 10,000  
SURVEYED BY  
VINCENT C. MCGERVEY  
Y.  
PT. -001  
PT. 8.51 A.



SFF 9-00-095-A

S # 21769

LINCOLN

10 - 014  
11 - 015