

#21766



MEADOW VIEW SUBD.

VOL. 12 P. 7

P.P. NO. 10-00-009-118-  
 10-00-009-900-  
 PRIOR INST.: DV. 847/575  
 CLOSURE: 0.03:10,000  
 R/W PLANS BY: LORAIN COUNTY ENGINEERS

21766

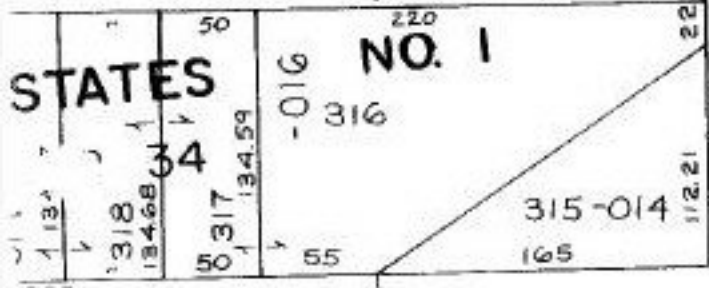
APPROVED  
LORAIN CO.  
MAP DEPT

DATE 5-15-96

PAGE 10-00-009-F

BY CAROLYN  
FRANCOIS

# 21766



YORK ST.

63.59  
R=227.60  
CH=63.38

ALAMEDA

AVE. 50

1883.68