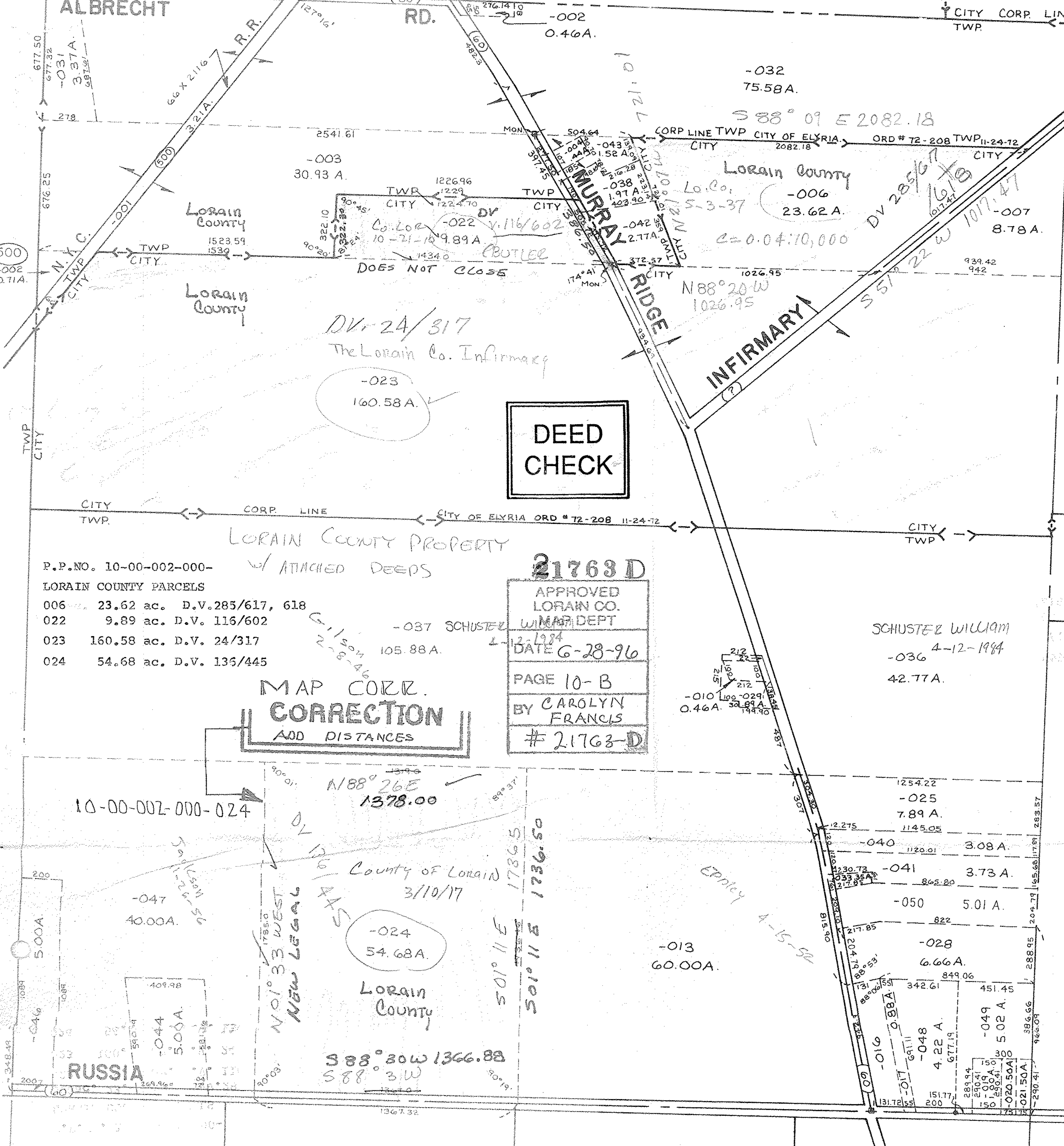


ALBRECHT

RD.

CITY CORP. LINE
TWP



**DEED
CHECK**

LORAIN COUNTY PROPERTY

- P.P.NO. 10-00-002-000-
LORAIN COUNTY PARCELS
- 006 23.62 ac. D.V. 285/617, 618
 - 022 9.89 ac. D.V. 116/602
 - 023 160.58 ac. D.V. 24/317
 - 024 54.68 ac. D.V. 136/445

**MAP CORR.
CORRECTION**
ADD DISTANCES

21763 D
APPROVED
LORAIN CO.
W/ MAP DEPT
DATE 6-28-96
PAGE 10-B
BY CAROLYN
FRANCIS
21763-D

GILSON
2-8-46

SCHUSTER WILLIAM
-036 4-12-1984
42.77A.

10-00-002-000-024

N 88° 26' E
1378.00

D.V. 136/445
County of Lorain
3/10/17
-024
54.68A.
LORAIN
COUNTY
501° 11' E 1786.5
501° 11' E 1736.50

-013
60.00A.

RUSSIA

-044
5.00A.

S 88° 30' W 1366.88
S 88° 3' W

-048 4.22 A.
-049 5.02 A.
-050 5.01 A.
-028 6.66 A.
-041 3.73 A.
-040 3.08 A.
-025 7.89 A.
-010 0.46 A.