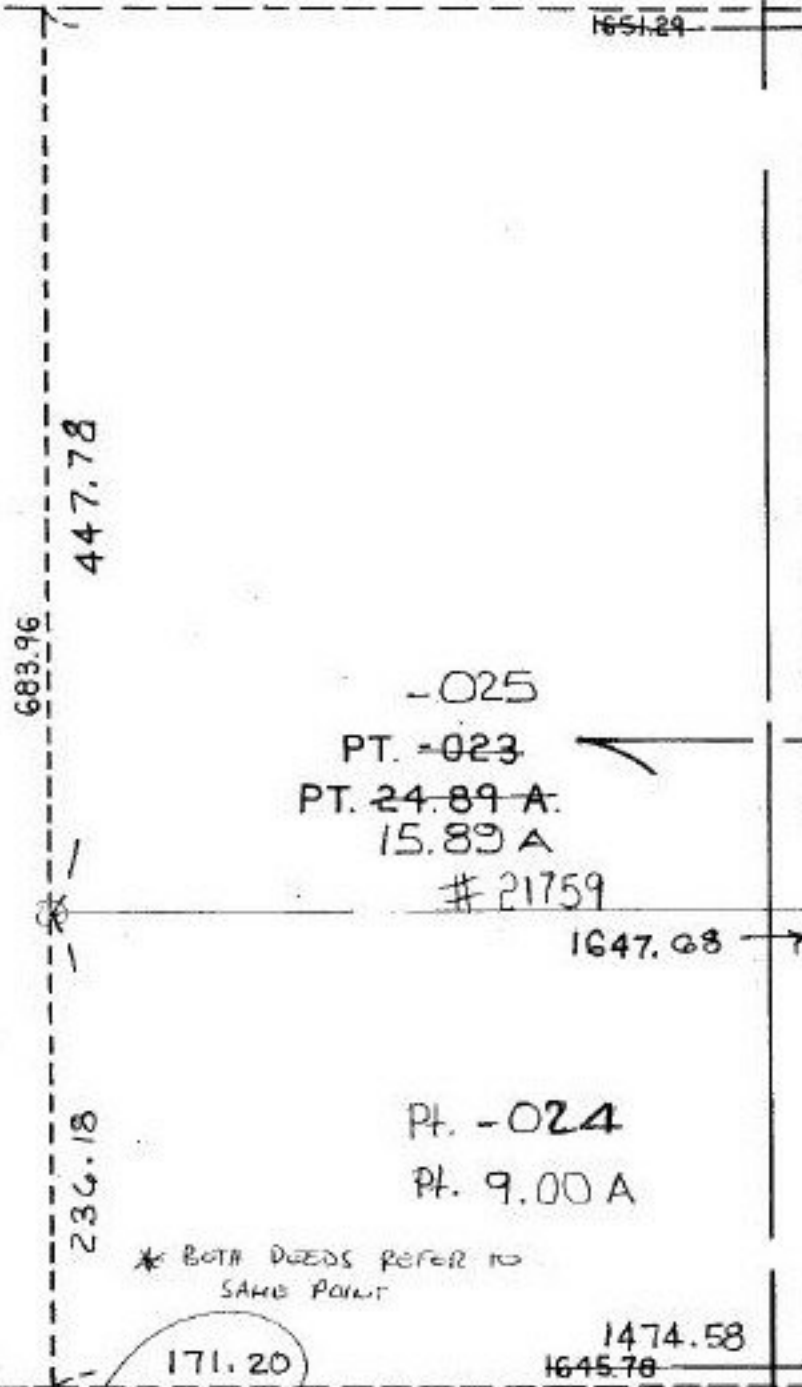


3-00-020-1759

3-00-020

SEE

P.P. NO. 03-00-020-000-
PRIOR INST.: O.R. 20/53
CLOSURE: 0.02:10,000
SURVEYED BY: KSA DAVID L. ELMWELL
REG. SURVEYOR



21759

APPROVED LOHAIN CO. MAP DEPT
DATE 5-3-96
PAGE 3-00-020 A
BY CAROLYN FRANCIS
21759