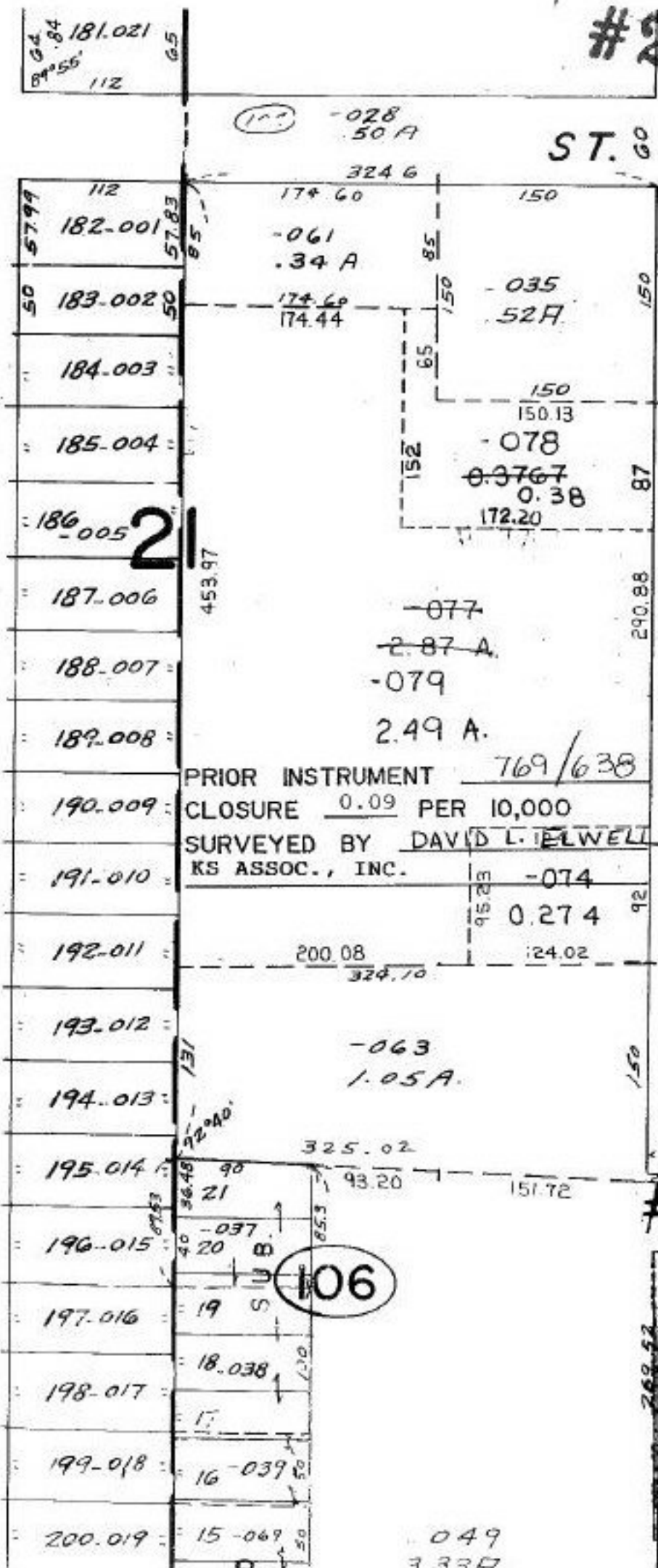
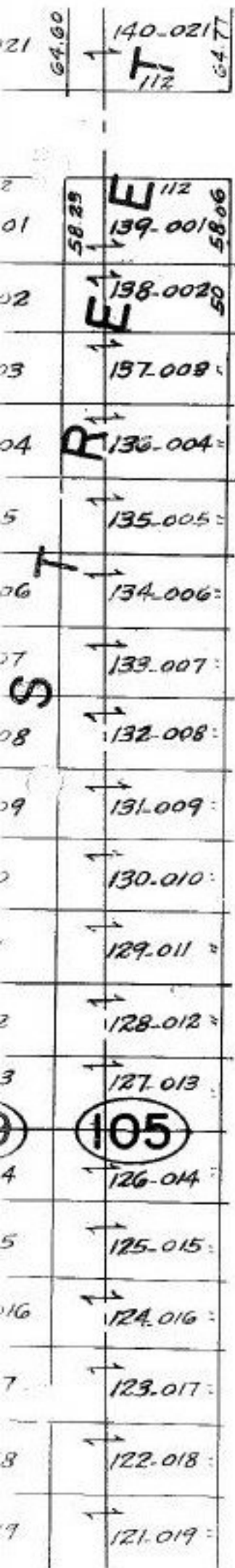


#21751

SEE 6-89



PRIOR INSTRUMENT 769/638  
 CLOSURE 0.09 PER 10,000  
 SURVEYED BY DAVID L. ELWELL  
 KS ASSOC., INC.

#21751

APPROVED  
 LORAIN CO.  
 MAP DEPT.  
 DATE 4-30-96  
 PAGE 6-88  
 BY K. DYE  
 WORD AFTER 21751

049  
3337