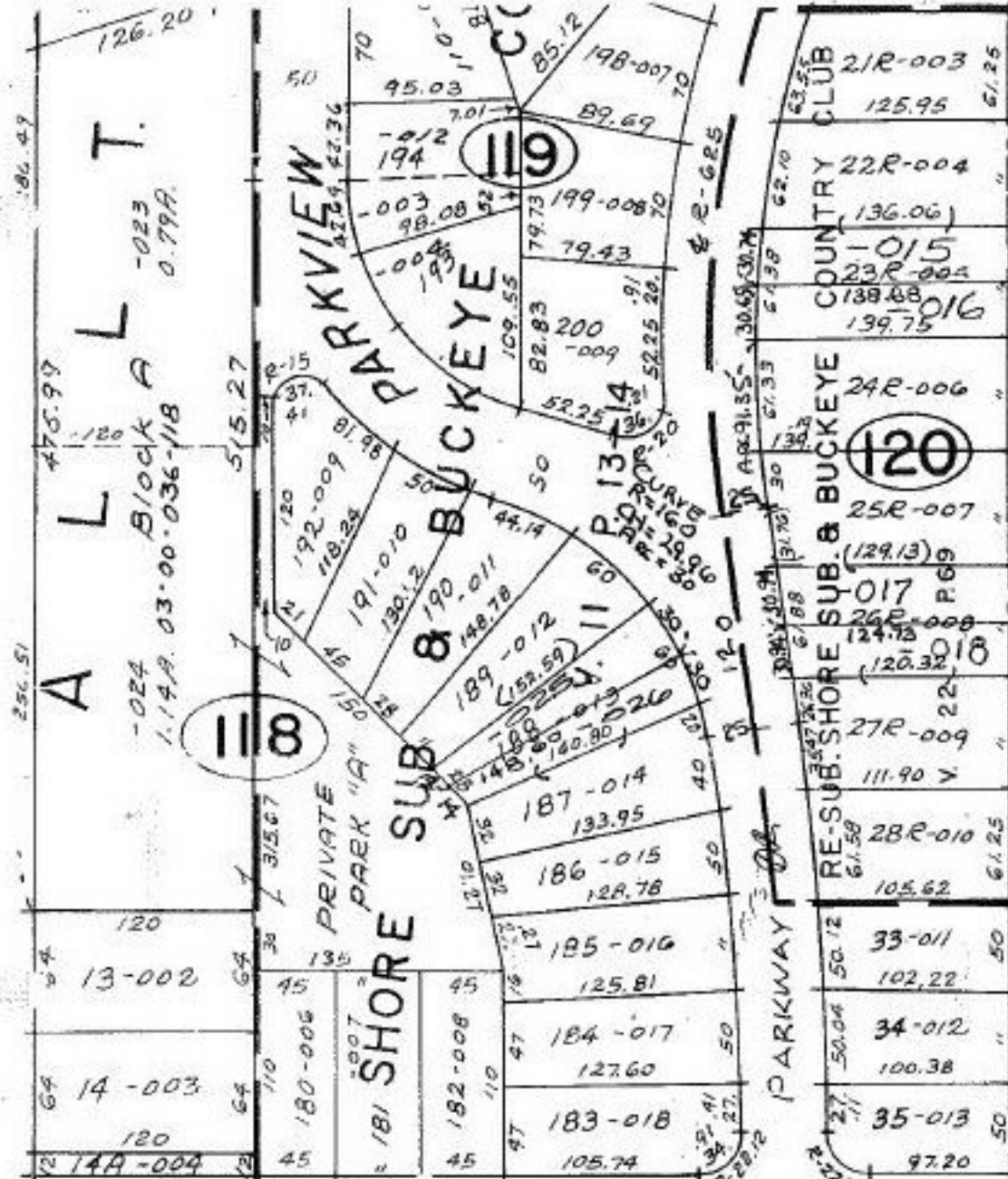


#21745



SEE 3-00-035

P.P.NO. 03-00-036-118- 03-00-036-120-  
 03-00-036-122-  
 PRIOR INST: (013)C.R.488/527(005 -008)C.R.429/339  
 (002)O.R.429/347  
 CLOSURE: (SL188) 0.20:10,000 0.17:10,000  
 (SL23R) 0.10ac 0.09:10,000 0.10ac. 0.19:10,000  
 (SL26R) 0.09ac 0.20:10,000 0.09ac. 0.12:10,000  
 (SL38R) 0.08ac.0.41:10,000 0.08ac. 0.41:10,000  
 SURVEYED BY: JOHN POZYWAK REG. SURVEYOR

3 DEEDS FILED  
 4 SPLITS  
 4 REMAINDERS  
 FILED FOR THIS SPLIT

21745

APPROVED  
 LORAIN CO.  
 MAP DEPT  
 DATE 5-23-96  
 PAGE 3-00-036A  
 BY CAROLYN  
 FRANCIS  
 # 21745

