

MAP CORRECTION ONLY

DRAW PARCELS FROM PAGE 3-00-063 THAT ARE NUMBERED IN O.C. 64

MAP CORRECTION ONLY

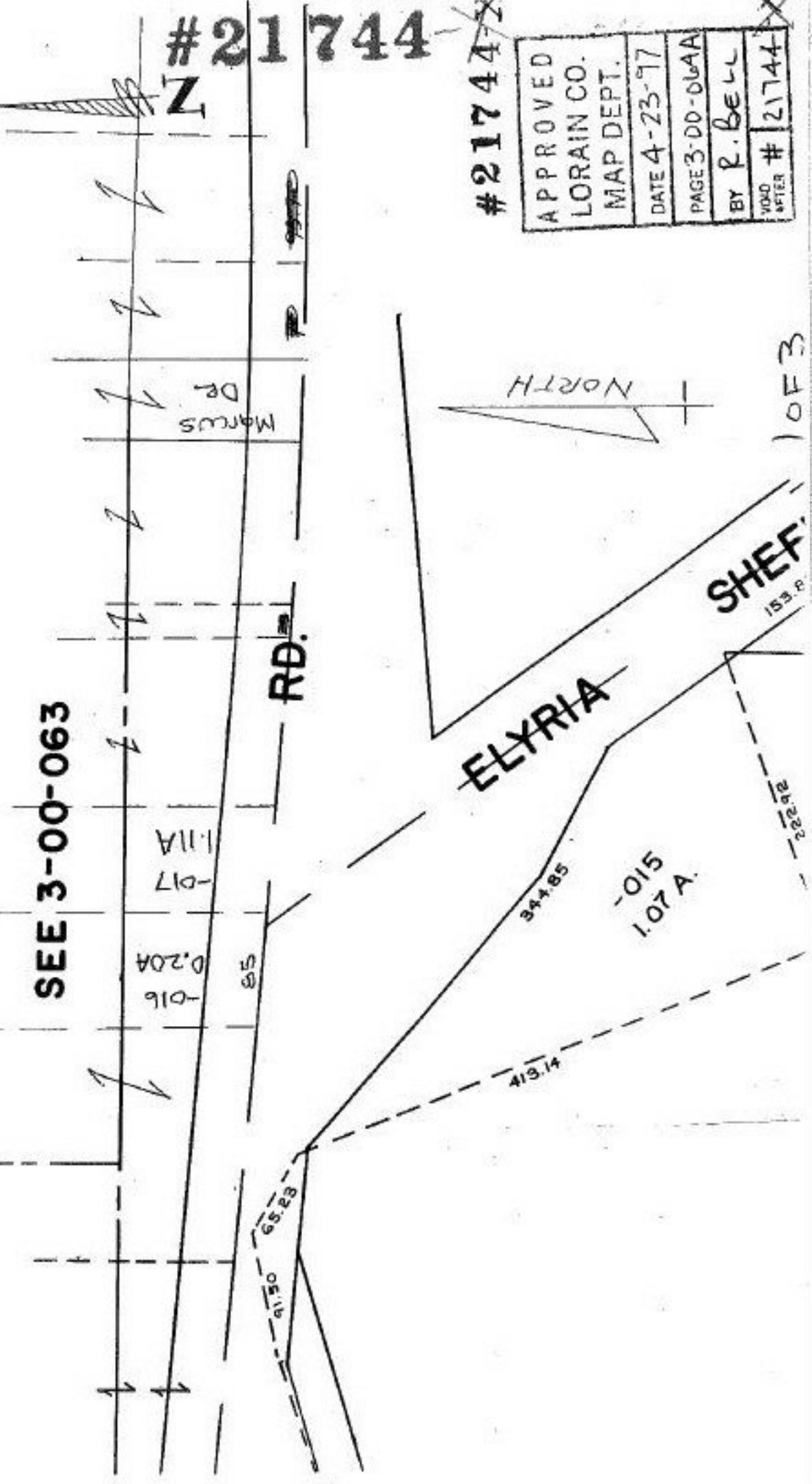
SEE 3-00-063

#21744

Z

#21744

APPROVED
LORAIN CO.
MAP DEPT.
DATE 4-23-77
PAGE 3-00-064A
BY R. BELL
VOID AFTER # 21744



3-00-064-A

10 OF 3

SHEP. 153.8