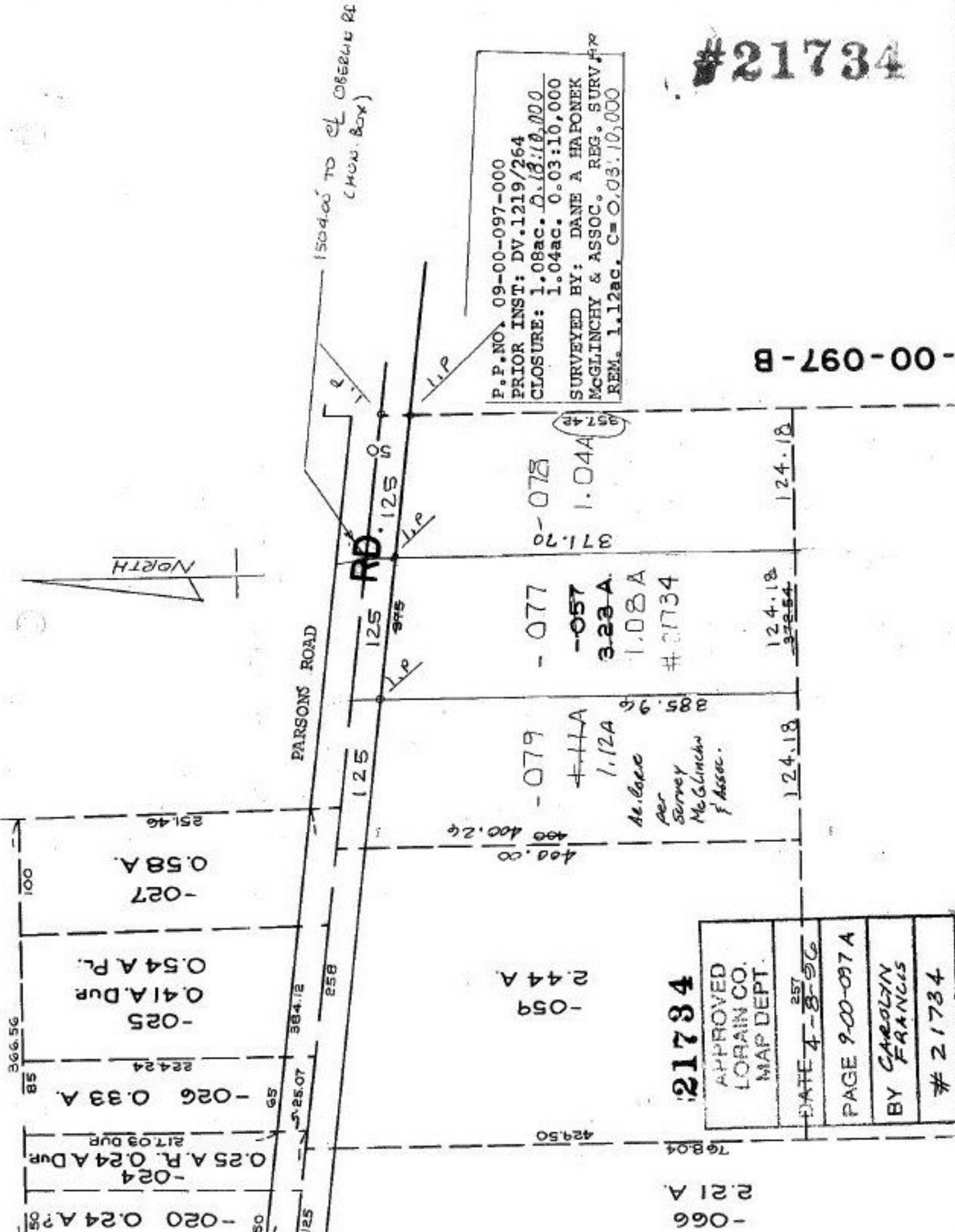


#21734

-00-097-B



P.P. NO. 09-00-097-000
 PRIOR INST: DV.1219/264
 CLOSURE: 1.08ac. D.18.10.000
 1.04ac. 0.03:10,000
 SURVEYED BY: DANE A HAPONEK
 MCGLINCHY & ASSOC. REG. SURV.
 REM. 1.12ac. C=0.03:10,000

1504.00 TO EL OBSERV RE
 (MUN. BOX)

NORTH

PARSONS ROAD

RD. 125

-027 0.58 A

-025 0.41 A Dup
0.54 A Pl.

-026 0.33 A

-024 0.25 A R. 0.24 A Dup

-020 0.24 A 25

-078 371.70

-077

-079

-059 2.44 A

-057 3.23 A

1.12 A

1.08 A
21734

Ac. base
per
Survey
McGlinchy
& Assoc.

124.18
32954

124.18

124.18

21734

-066 2.21 A

76804

42450

125 975 125 975

125 975

125 975

125 975

125 975

125 975

125 975

125 975

125 975

125 975

125 975

125 975

125 975

125 975

125 975

125 975

125 975

125 975

125 975

125 975

125 975

125 975

125 975

125 975

125 975

125 975

125 975

125 975

125 975

125 975

125 975

125 975

125 975