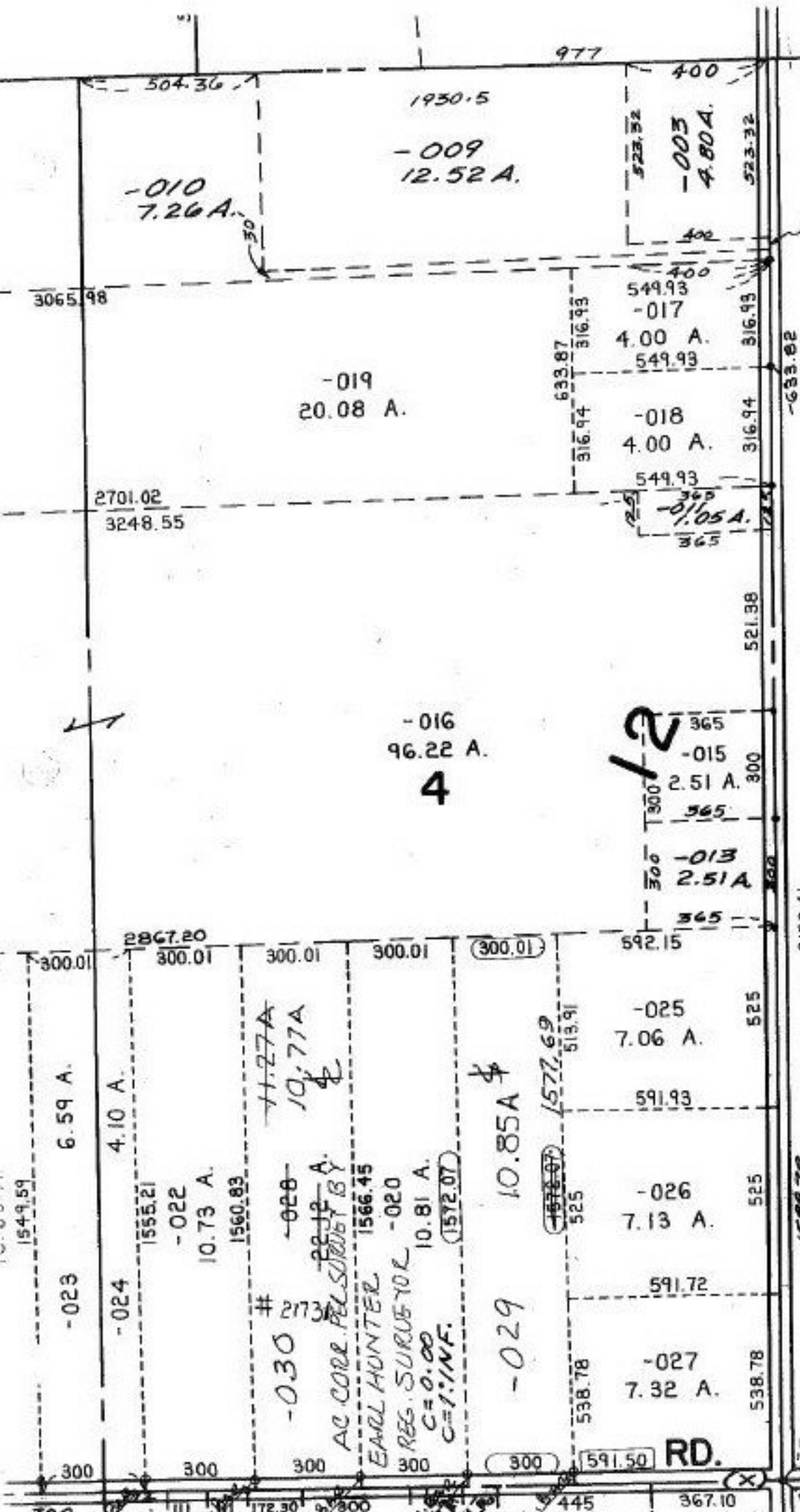


#21731



**SEE 8-H**  
 P.P. NO. 08-12-004-000-  
 PRIOR INST: O.R. 1146/446  
 CLOSURE: 1: INF.  
 SURVEYED BY: EARL HUNTER REG. SURVEYOR

GIFFORD RD.

21731

APPROVED  
 LORAIN CO.  
 MAP DEPT

DATE 4-3-96

PAGE 8-G

BY CAROLYN  
 FRANCIS

# 21731

