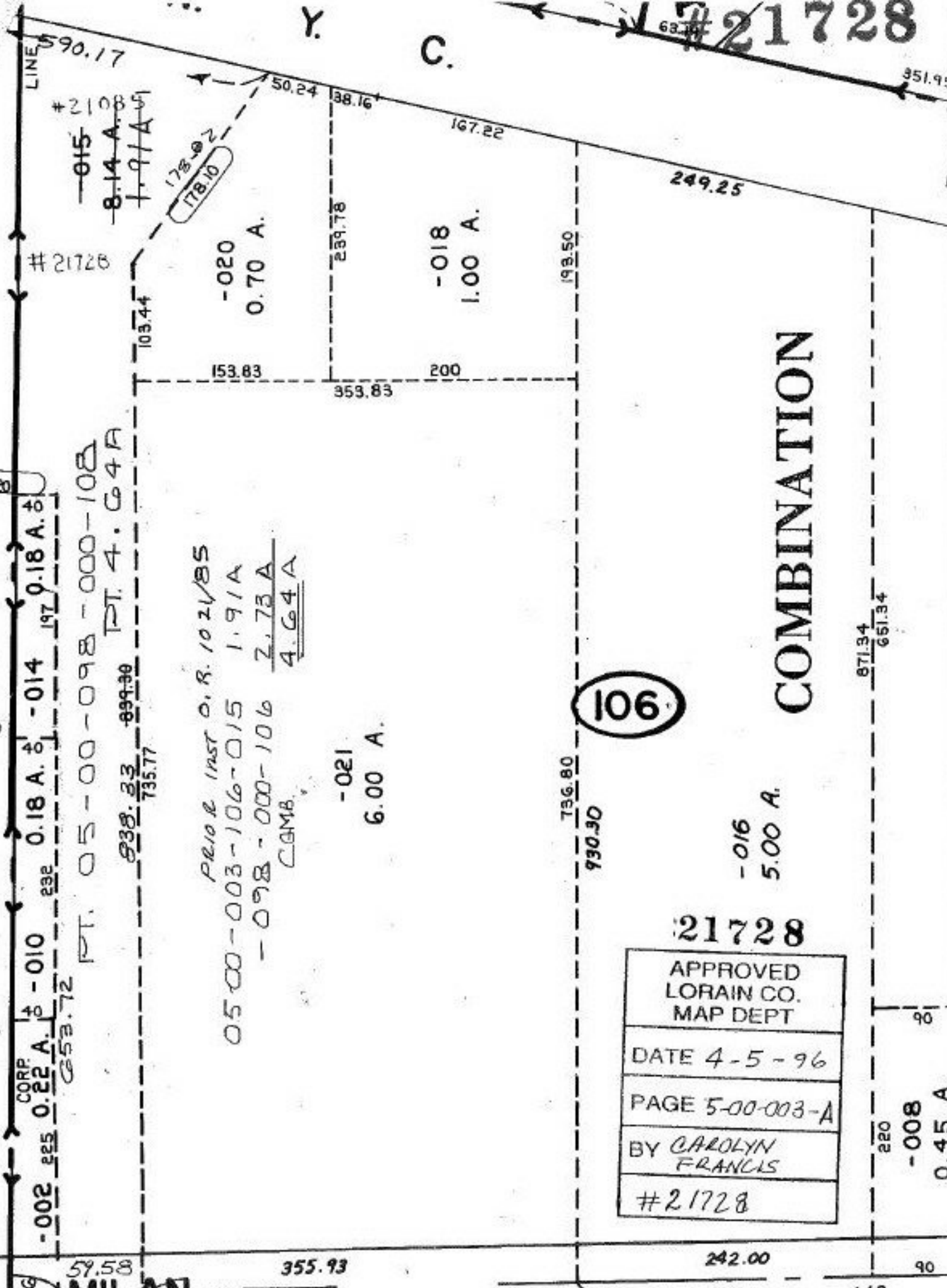


#21728

Y. C.



#21728  
 -015  
 8.14 A. 0.8  
 1.91 A. 0.51

178.02  
 178.10

-020  
 0.70 A.

-018  
 1.00 A.

-021  
 6.00 A.

-016  
 5.00 A.

106

COMBINATION

21728

APPROVED LORAIN CO. MAP DEPT
DATE 4-5-96
PAGE 5-00-003-A
BY CAROLYN FRANCIS
#21728

Prior Inst O.R. 1021/85  
 0500-003-106-015 1.91A  
 -098-000-106 2.73A  
 C&MB.  
 4.64A

PT. 05-00-098-000-102  
 PT. 4.64A  
 838.33 899.30  
 735.77

CORP.  
 -002 0.22 A. 0.1  
 0.10 0.18 A. 0.1  
 0.14 0.18 A. 0.1  
 653.72

MILAN