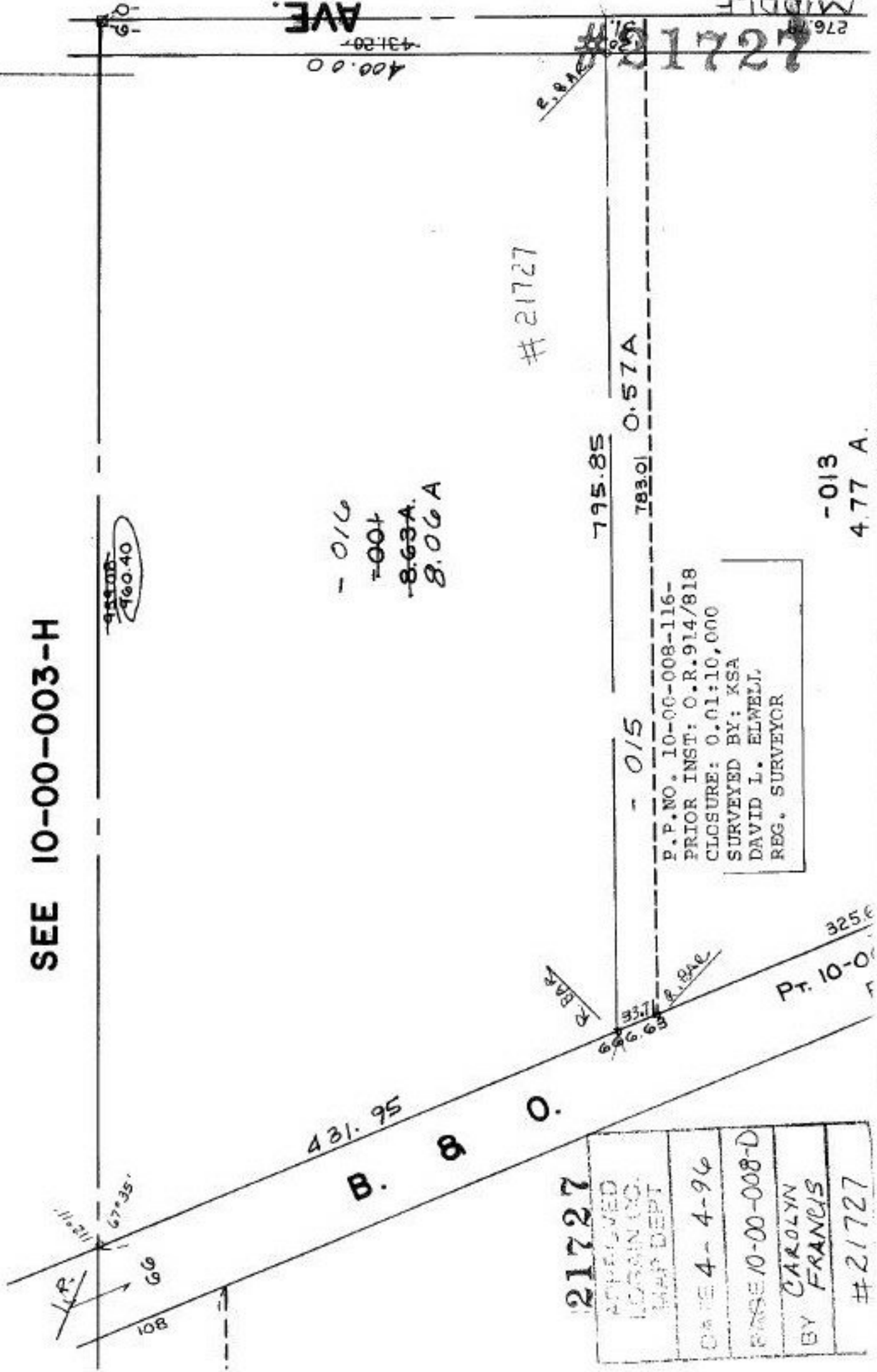


SEE 10-00-003-H



- 016
 - 004
 - 8.63A.
 8.06A

21727

795.85
 783.01 0.57A

- 015

P.P. NO. 10-00-008-116-
 PRIOR INST: O.R. 914/818
 CLOSURE: 0.01:10,000
 SURVEYED BY: KSA
 DAVID L. ELWELL,
 REG. SURVEYOR

- 013
 4.77 A.

481.95
 B. B. O.

21727

APPROVED
LEAHAN CO.
MAP DEPT
DATE 4-4-96
INSE 10-00-008-D
BY CAROLYN
FRANCIS
21727

325.6
 Pt. 10-00

110.21
 67°35'
 66
 108

960.40

431.20
 400.00
 AVE.

276
 21727
 MIDDLE AVE.