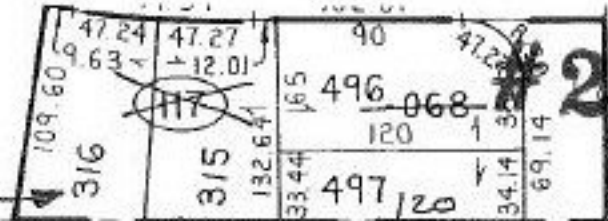


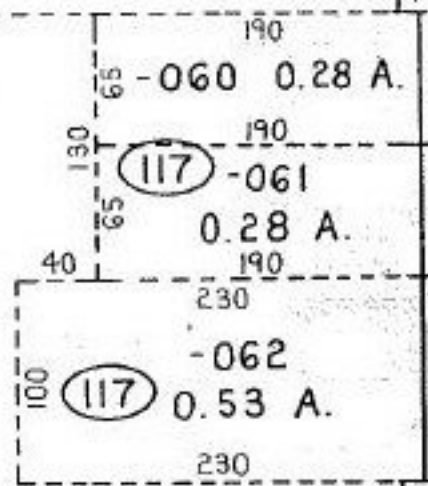
105 -058

#21718-X  
AVON MEAD  
VOL. 23

PARCEL NUMBER  
CHANGE



481.55  
2315.00 to NE CORNER? SEE PLAN



LEAR + NAGLE

21718-X  
EM...  
355

#21718-X

PARCEL  
NUMBER  
CORRECTION

APPROVED LORAIN CO. MAP DEPT.	
DATE 10-10-96	
PAGE 4-00-024 D	
BY <i>J. Collier</i>	
VOID AFTER	21718X

202.53  
60

150 230

4-00-024-D

42