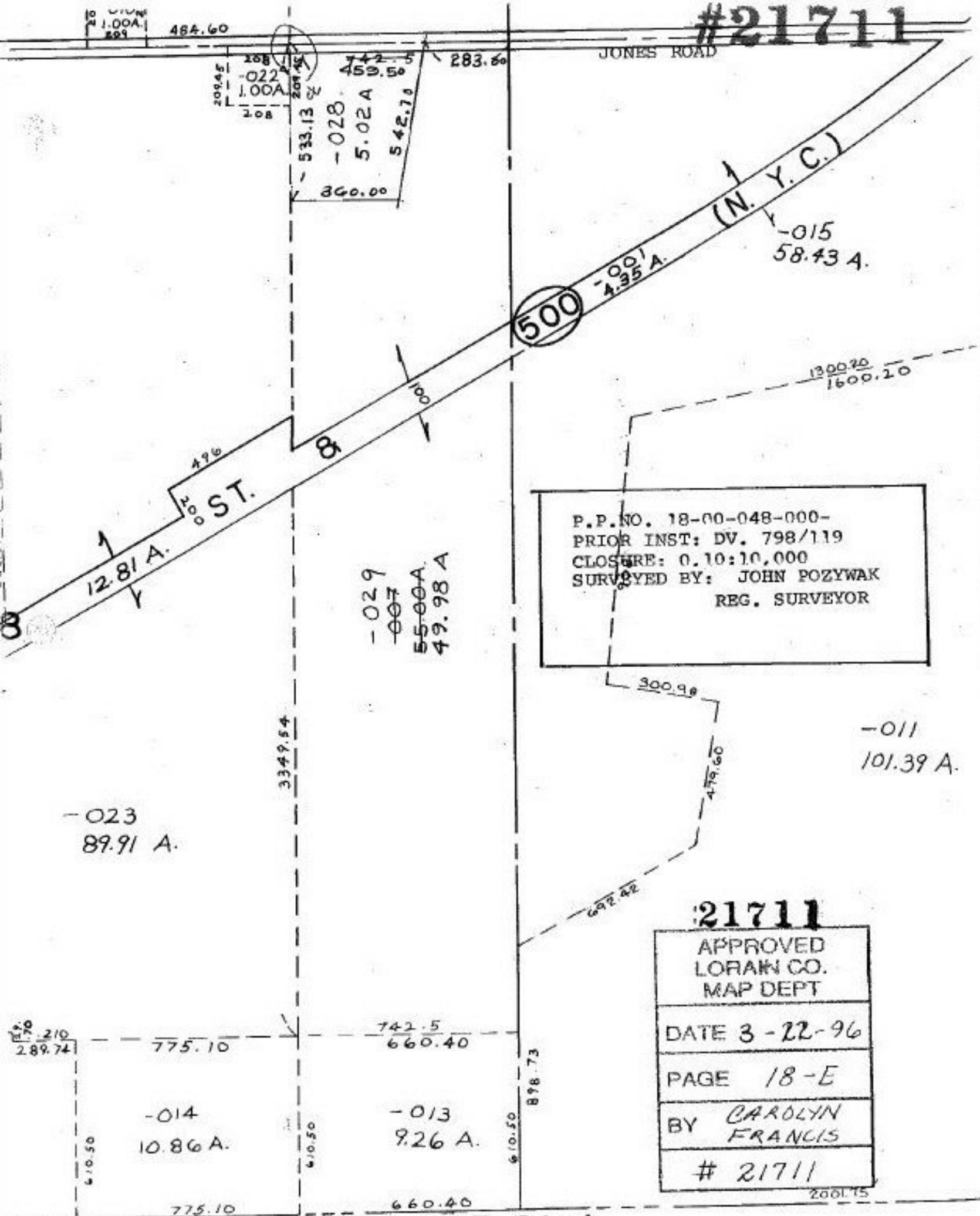


#21711



P.P. NO. 18-00-048-000-
 PRIOR INST: DV. 798/119
 CLOSURE: 0.10:10.000
 SURVEYED BY: JOHN POZYWAK
 REG. SURVEYOR

#21711
 APPROVED
 LORAIN CO.
 MAP DEPT
 DATE 3-22-96
 PAGE 18-E
 BY CAROLYN
 FRANCIS
 # 21711

SEE 21-A